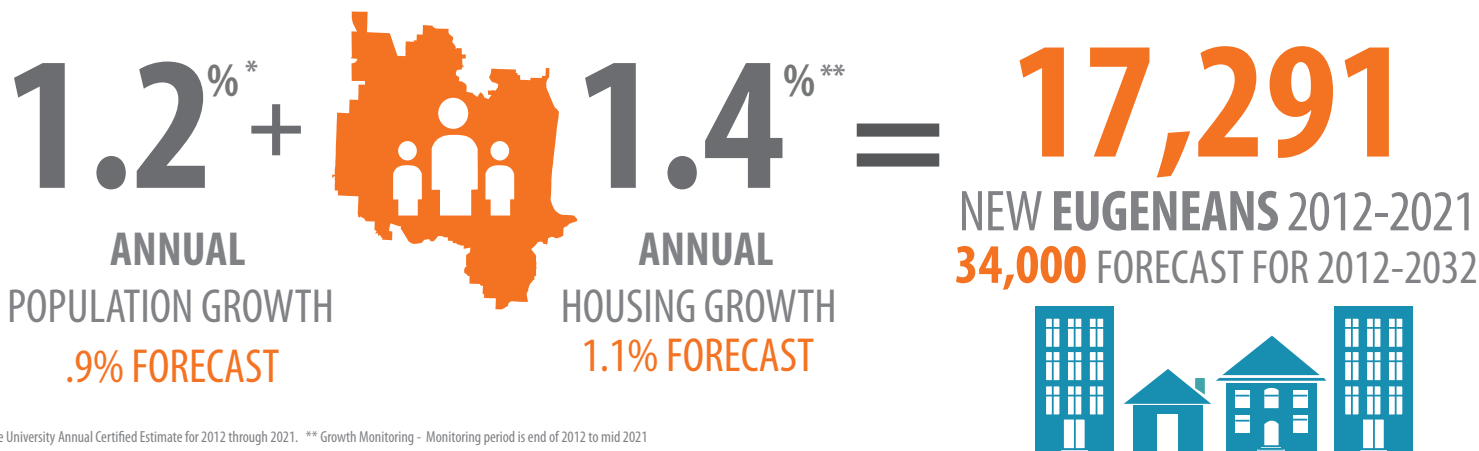


POPULATION & AFFORDABILITY 2021 MONITORING SNAPSHOT

How Are We Growing?



Who Lives in the Community?

THERE WILL BE MORE RESIDENTS OVER 75



Ages 75+ expected to grow **67%** by 2045

Portland State University 2021 Forecast for Lane County

AGES 20-24 WILL CONTINUE TO BE THE LARGEST SHARE OF THE POPULATION THROUGH 2045



UO projects continued moderate enrollment growth.

POPULATION FORECAST

2027

Deaths will outpace births but with immigration net growth will continue

2040 to 2070

Population growth rate slowing from **.9%** to **.5%** through 2070

How Affordable is the Community?

Housing Affordability*



Median Household Income

Increased **31%** since 2012

Oregon's median income is \$67,000



\$1,099

Median Rent Increased **32%** since 2012



\$395,000

Median Sales Price**
Since 2012 the median price of single family dwellings increased **119%**

41%

of households are cost-burdened
Spending over 30% of income on housing

56% of renters
25% of owners

*2019 ACS 1-year

** Regional Land Information Database Sales Data for 2021



GROWTH MONITORING
PREPARING FOR CHANGE WITH BETTER DATA