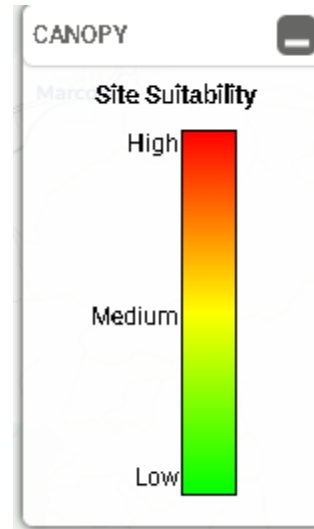
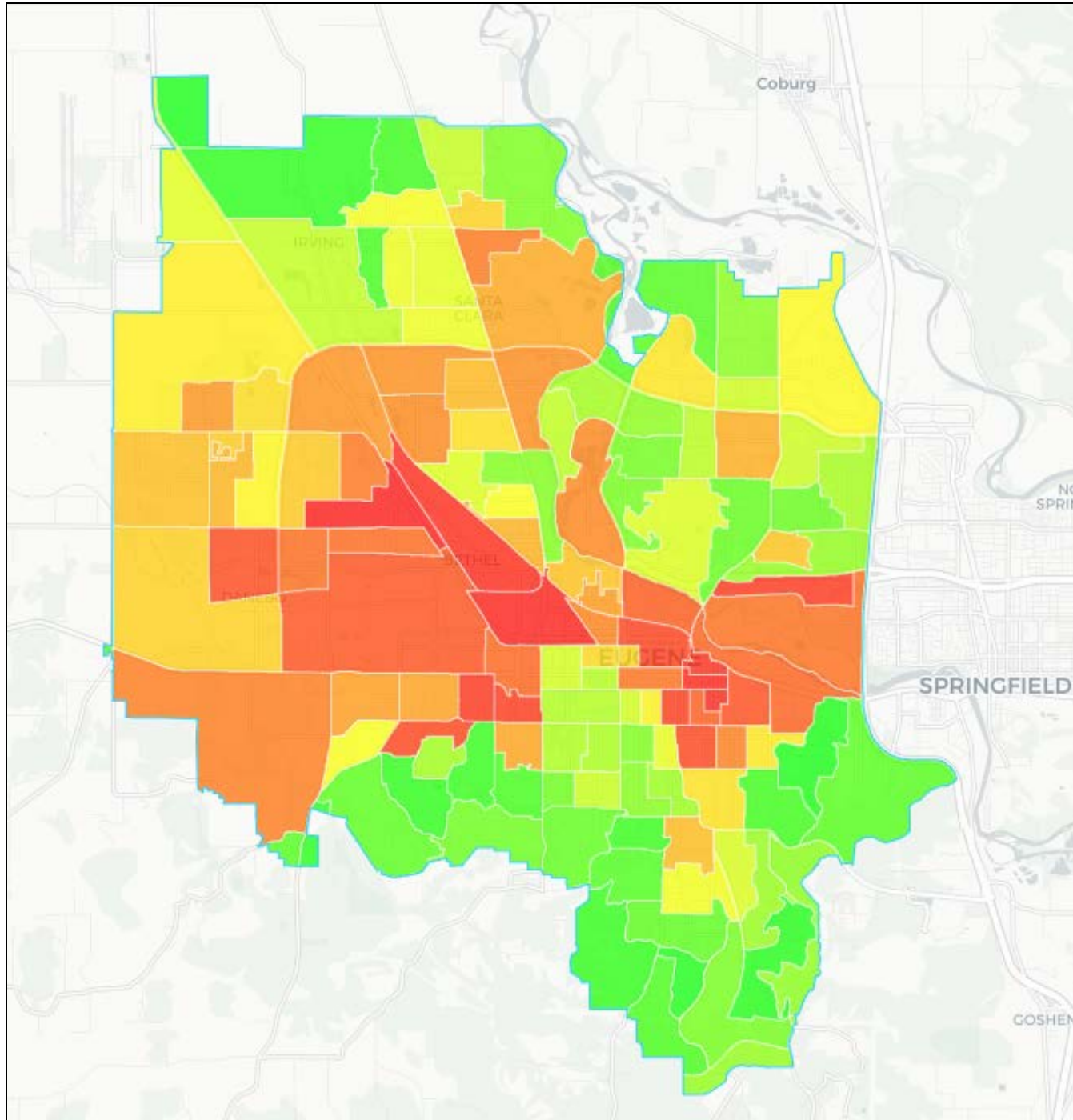


1, Active Bethel Citizens	UTC =10%; UTCΔ =+1%
2, Trainsong Neighbors	UTC =6%; UTCΔ =-1%
3, Cal Young Neighborhood Association	UTC =27%; UTCΔ =+1%
4, Harlow Neighbors	UTC =21%; UTCΔ =0%
5, Whiteaker Community Council	UTC =26%; UTCΔ =-2%
7, Churchill Area Neighbors	UTC =28%; UTCΔ =-1%
8, Far West Neighborhood Association	UTC =20%; UTCΔ =-2%
10, West University Neighbors	UTC =15%; UTCΔ =-1%
11, Friendly Area Neighbors	UTC =20%; UTCΔ =-2%
12, South University Neighborhood Association	UTC =25%; UTCΔ =-2%
13, Amazon Neighbors Association	UTC =25%; UTCΔ =11%
14, Fairmount Neighbors	UTC =1%; UTCΔ =-4%
15, Laurel Hill Valley Citizens	UTC =52%; UTCΔ =-2%
16, Southwest Hills Neighborhood Association	UTC =47%; UTCΔ =-5%
17, Southeast Neighbors	UTC =49%; UTCΔ =-5%
18, West Eugene Community Organization	UTC =6%; UTCΔ =0%
19, Downtown Neighborhood Association	UTC =13%; UTCΔ =-1%
20, River Road Community Organization	UTC =24%; UTCΔ =-1%
21, Santa Clara Community Organization	UTC =18%; UTCΔ =-1%
22, Industrial Corridor Community Organization	UTC =2%; UTCΔ =0%
24, Jefferson Westside Neighbors	UTC =20%; UTCΔ =-2%
25, Goodpasture Island Neighbors	UTC =25%; UTCΔ =+3%
26, Northeast Neighbors	UTC =18%; UTCΔ =+2%
[Dashed Box]	Urban Growth Boundary

Average Citywide UTC=22.1%	Citywide UTC Δ (2011-2019)= -0.7%
Average Citywide ROW UTC=%17	Citywide ROW UTC Δ (2011-2019)= 0%
Average Citywide Park UTC =%32	Average Citywide Park UTC Δ (2011-2019)=0%

Eugene Tree Equity Map (showing vulnerable population areas and need for increased tree canopy for each Census Block Group)



For more detailed information on Eugene's Tree Canopy Situation, please visit: <https://pg-cloud.com/EugeneOR/>