

EUGENE CITY COUNCIL AGENDA ITEM SUMMARY



Work Session: 2020 Census and Ward Population Update

Meeting Date: February 17, 2021
Department: Central Services
www.eugene-or.gov

Agenda Item Number: 1
Staff Contact: Jason Dedrick
Contact Telephone Number: 541-682-5033

ISSUE STATEMENT

Every 10 years, the Eugene City Council examines the population of City Council wards, based on the results from the U.S. Census. Data from the 2020 Census will be available in the coming months, and federal, state and local districts will all be addressing potential boundary adjustments to accommodate population changes. This work session provides Council an opportunity to begin discussions on the council role, criteria, public engagement process, and schedule that will guide the development of scenarios and eventual decisions.

BACKGROUND

The basic purpose of this process is to ensure that each ward has approximately equal population distribution. In 2001 and 2011, the council as a whole performed the necessary work. In 2011, the public engagement process included a public forum, meetings with neighborhood and civic groups, a website with data and interactive maps, an online survey, regular updates to an interested parties list, and formal public hearings.

In 2011, the council adopted the following criteria to guide development of boundary options:

- A population range difference of 3 percent, plus or minus, among wards
- Work with 2010 U.S. Census data and do not assume potential growth
- Develop scenarios that consider geographic and neighborhood features and strive for relative compactness and contiguity without rigid adherence to these characteristics
- Provide demographic information with scenarios to support consideration of potential impacts

While not adopted as formal criteria, several councilors suggested that options should neither “protect nor punish” incumbent elected officials (City Council, EWEB) and should strive for modest rather than wholesale change. Individual councilors asked that options also consider socioeconomic status (communities of interest) and try to avoid further splitting up neighborhood associations.

Attachment A provides a draft schedule for this process. While initial work on the council process, criteria and public engagement approach can proceed, the remainder of the timeline will be dependent on when census data is received, as delays are anticipated. In the past, final decisions

February 17, 2021, Work Session – Item 1

have been made by December 31 (October 24 in 2011).

Attachment B outlines the options for the council role, public information, and public engagement. The framework for public information and engagement will depend in part on the decision-making process Council chooses. A summary of residential building data and location map from the last 10 years is provided in Attachment C. Although this doesn't reflect population shifts among the wards, permitting data does provide a snapshot of new residential development in recent years and where population growth may have occurred.

PREVIOUS COUNCIL DIRECTION

This is the first work session regarding the 2020 U.S. Census data and ward boundaries.

Previous Council direction was associated with the 2011 process described above.

COUNCIL OPTIONS

Options for the project timeline, public engagement, and process oversight are described in the attachments.

ATTACHMENTS

- A. Draft Timeline
- B. Process and Public Engagement Options
- C. Residential Building and Location Map, 2011-2021
- D. Current Ward Boundary Map

FOR MORE INFORMATION

Staff Contact: Jason Dedrick
Telephone: 541-682-5033
Staff E-Mail: jdedrick@eugene-or.gov

2021 Ward Population Update Draft Timeline

Time Frame	Possible Steps & Decision Points
February 17, 2021	Initial Eugene City Council work session to share information, identify issues, and discuss general approach.
Late winter/early spring	Review and agree on boundary adjustment criteria. Provide information and obtain public input on criteria.
Late spring	Review 2020 U.S. Census data.
Late spring/early summer	Council provides direction to staff on ward boundary options. Provide information and obtain public input on options.
Summer/early fall	Review options for ward boundaries.
Fall	Council provides direction on boundary revisions or new ward options. Provide information and obtain public input on suggested boundary revisions.
Fall	Prepare ordinance and map.
Before December 31, 2021	Adopt new ward boundaries.

2021 Ward Population Update Process and Public Engagement Options

Process Oversight Options

- ☐ Council provides direction for tasks, schedule and scenarios
- ☐ Council subcommittee studies issues and provides recommendations
- ☐ Ad hoc committee formed with invited membership to advise staff and council

Public Information Options

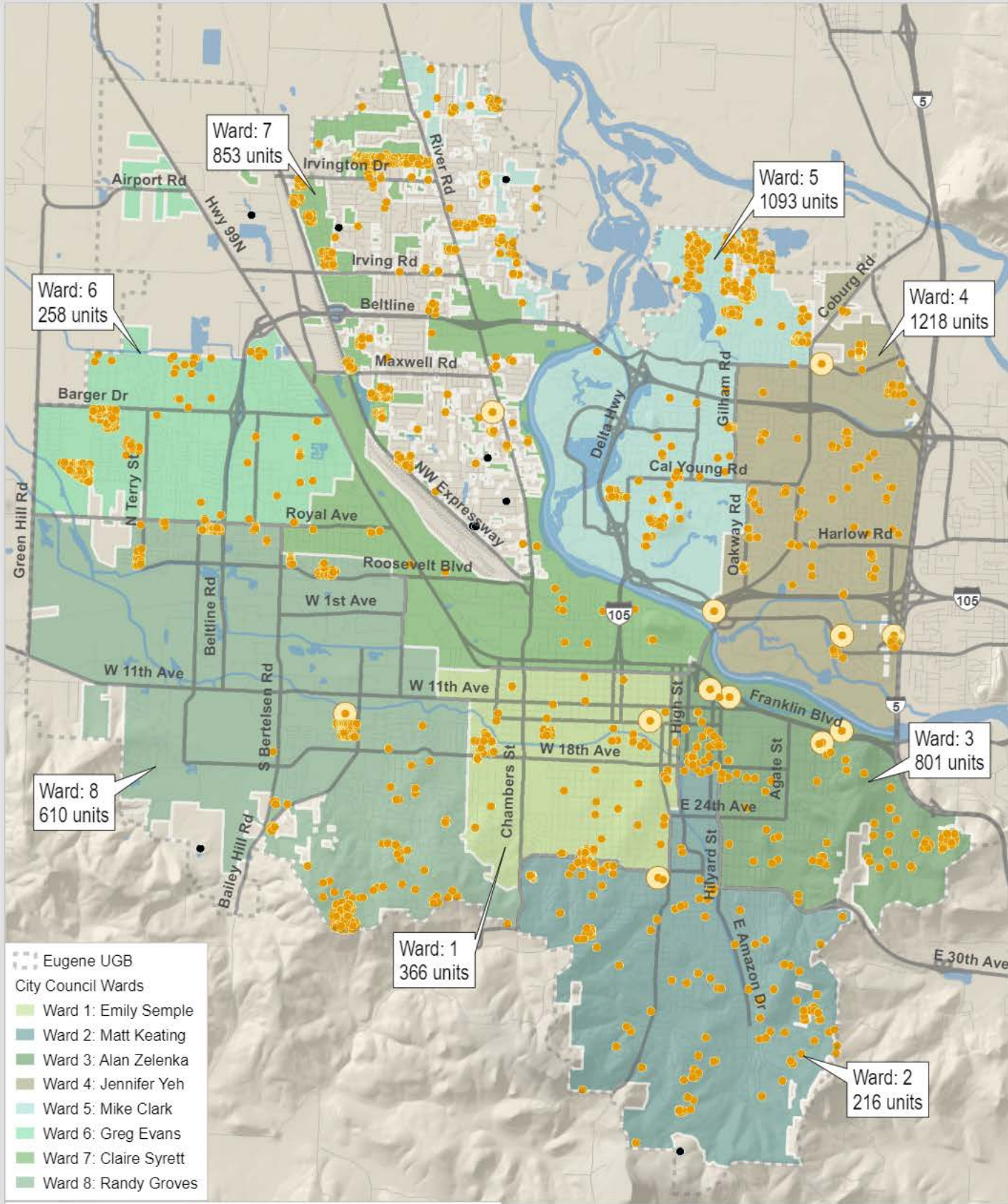
- ☐ City web page – population and voting data, interactive maps and links to relevant sites, up-to-date information on public meetings, legal requirements and legal challenge options, redistricting timeline
- ☐ Information handouts for City offices, etc.
- ☐ Interested parties list for news releases, meeting notices and information handouts
- ☐ Articles for neighborhood newsletters
- ☐ Presentations to civic organizations and neighborhood associations (City Council and/or staff)

Public Engagement Options

- ☐ Public forum(s) before key council decisions (such as boundary adjustment criteria)
- ☐ Public hearing before council adoption of new ward boundaries
- ☐ Online surveys (ward boundary options)



City of Eugene Residential Permits 2011-2021



Ward: 7
853 units

Ward: 5
1093 units

Ward: 6
258 units

Ward: 4
1218 units

Ward: 8
610 units

Ward: 3
801 units

Ward: 1
366 units

Ward: 2
216 units

- Eugene UGB
- City Council Wards
- Ward 1: Emily Sample
- Ward 2: Matt Keating
- Ward 3: Alan Zelenka
- Ward 4: Jennifer Yeh
- Ward 5: Mike Clark
- Ward 6: Greg Evans
- Ward 7: Claire Syrett
- Ward 8: Randy Groves

- New residential permits with approved occupancy 2011-2021
- Developments with over 20 units proposed
- New residential permits not in Eugene city limits: 9 permits, 9 units



2/9/2021
Caution: This map is based on imprecise source data, subject to change, and for general reference only

