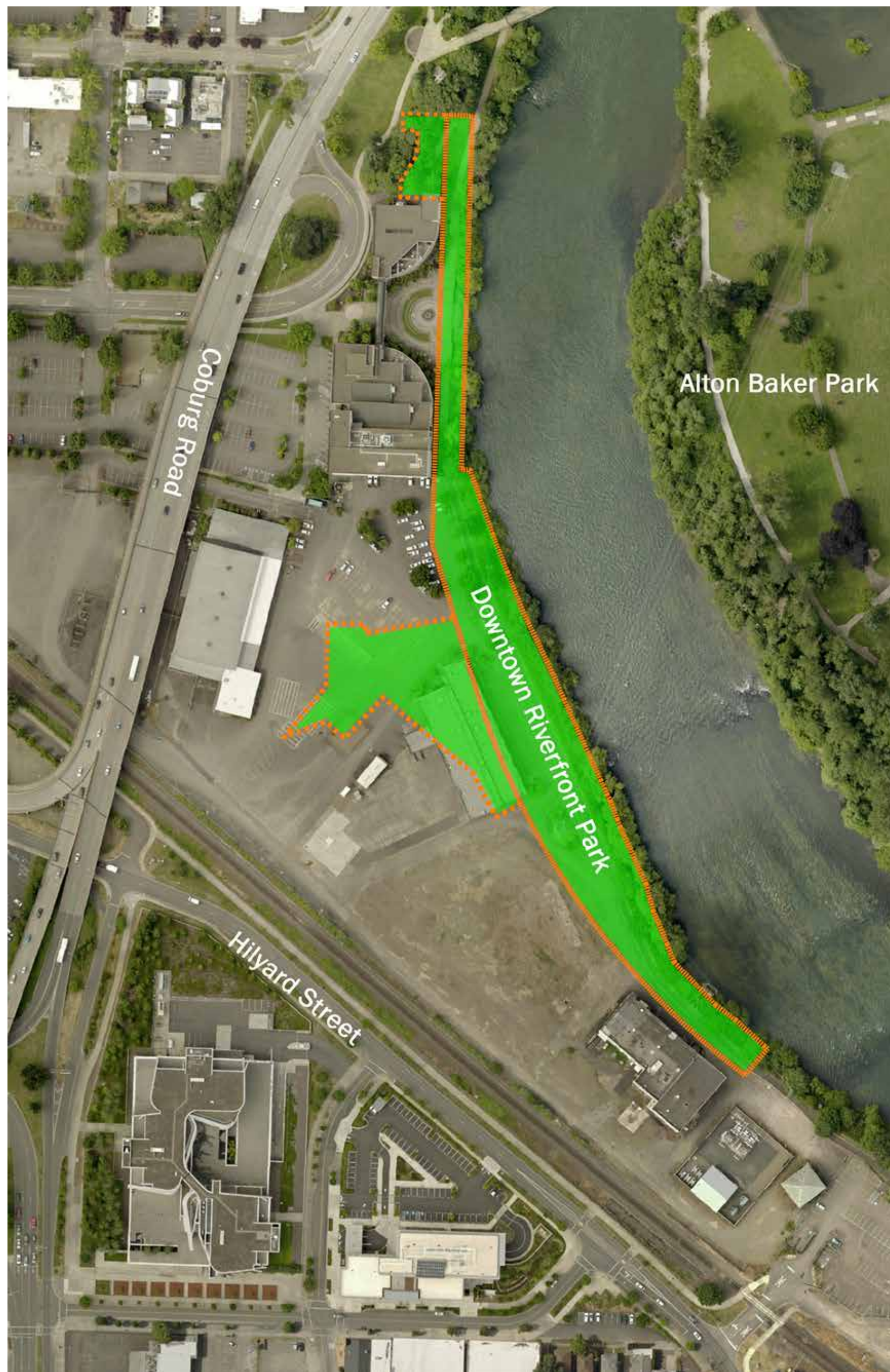


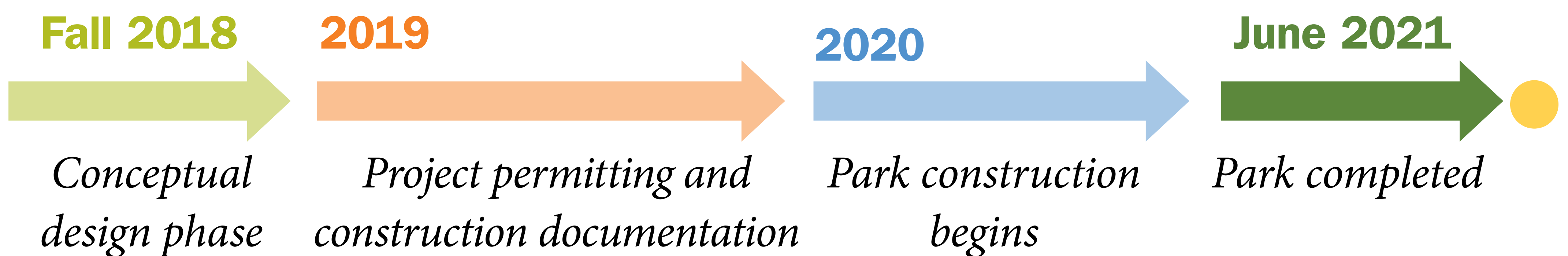
Downtown Riverfront Park



One of the priorities the City heard most clearly in talking to the community about the future of parks and recreation in Eugene, is providing access to the river — for everything from recreation to simply enjoying the views. The four-acre Downtown Riverfront Park will be the heart of the greater riverfront development that reimagines a new, vibrant future and will, once again, unite our city with the river.

Since the launch of this project, the City has directed the consultant team to add the one-acre parcel designated as “Public Plaza” from the larger redevelopment plan to the existing three-acre Riverfront Park site. The park design will now seamlessly connect to the open public space on the redevelopment site for a total of four acres, serving as a draw and important complement to the restaurants, retail, housing and hotel envisioned for the future.

Timeline for Completion



Our goal is to transform this industrial site into a vibrant Downtown Riverfront Park for current and future generations to enjoy, just in time for the 2021 World Track and Field Championships.