



Paving Project Information

Minda Drive Pavement Preservation Project

Paving of Minda Drive from Gilham Road to Norkenzie Road

Project Location

Minda Drive from Gilham Road to Norkenzie Road

Project Overview

- This project will rehabilitate the pavement on Minda Drive by replacing the top layers of deteriorated pavement and repairing sections of pavement that have completely failed.
- Sidewalk access ramps will be reconstructed at several locations.

Construction Schedule

- Construction Schedule-Summer 2012

Traffic Impacts

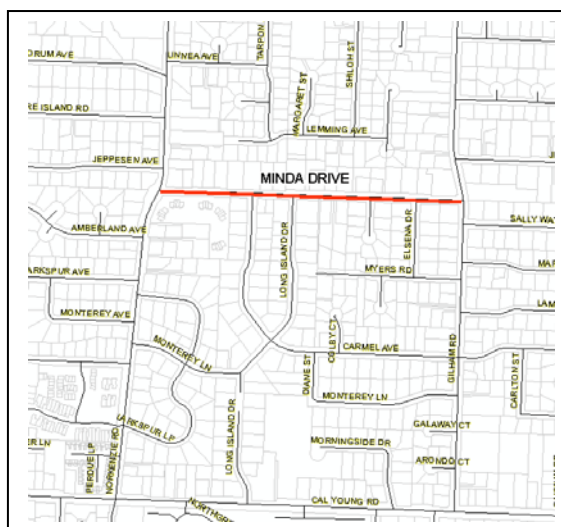
- At times Minda Drive will be opened to one-way traffic only.
- Watch for construction signs and equipment.

Project Funding

- Major Funding Source
 - Local Fuel Taxes
- Minor Funding Sources
 - Wastewater Utility Fees

For More Information

- John Bonham, Project Manager, ph 541-682-5300, john.j.bonham@ci.eugene.or.us Online road reports at www.eugene-or.gov/traffic
- Metro roadwork hotline at 541-984-8484
- On Twitter at www.Twitter.com/EugenePW



Last updated May 30, 2012