

BETHEL PARKS AND RECREATION

Eugene's Parks and Recreation system is categorized into six neighborhood planning sub-areas. This report addresses parks and recreation facilities and needs in the Bethel area. Geographically-based planning allows us to look at the unique characteristics and opportunities of each area and how facilities and services are distributed throughout the Eugene community.

Existing Resources and Facilities-

The Bethel sub-area currently has 1,675 acres of parks, recreation and open space (including partner-owned lands), with 762 of those acres owned by the City of Eugene. The vast majority of these acres are natural areas rather than developed parks. Bethel has the following distinct features:

RECREATION SERVICES

- Petersen Barn Community Center provides recreational services and programming that include:
 - Preschool Childcare
 - Youth classes and camps
 - Afterschool Program/ Childcare at Cascade Middle School
 - 3 Summer Fun For All Sites (free recreation opportunities for youth in area parks)
 - Special Events
 - Senior Services Programming
- Echo Hollow Pool is a year round indoor/outdoor pool facility with a small fitness center and special events room.
 - Water fitness classes & lap swimming
 - Recreation swims
 - Swim lessons
 - Life guard certification classes
 - Youth camps
 - Swim team practice facility for clubs and high schools

PARKS

- Nine neighborhood parks and three community parks serve the area.
 - Bethel Community Park and Petersen Park function as community parks for the sub-area and have many amenities including play areas, sports fields and other specialty facilities.
 - Golden Gardens Park is a large future community park site that includes natural areas, trails and opportunity for developed amenities.
 - These neighborhood parks are in the Bethel area: Candlelight Park, Gilbert Park, Irwin Park, Lark Park, Mangan Park, State Street Park, Trainsong Park
 - Two future neighborhood park sites are in the Bethel area: Grasshopper Meadow Park, Royal/Elizabeth Park
- Specialty facilities include:
 - Candlelight dog park;
 - Skate parks at Bethel Community Park and Trainsong Park; and
 - Small community garden on Bethel School District property.

- In addition to playgrounds at parks, school playgrounds are accessible at Meadowview School, Clear Lake Elementary, Danebo Elementary, Prairie Mountain School, Malabon Elementary and Fairfield Elementary Schools

SPORTS FACILITIES

- Shasta Ballfields is a 4-field softball complex owned by Bethel School District, and co-managed with the City of Eugene Athletics Program.
- The Ted Norman Memorial Baseball Complex is a four field baseball complex built on City property and managed by the local Willamette Valley Babe Ruth Association.
- Artificial turf fields (2) are located at Willamette High School and Meadowview Middle School.
- All-weather surface tracks are available at Willamette High School.
- Tennis courts (4) are available at Willamette High School/ Echo Hollow.
- Indoor gyms for basketball and volleyball are available at Willamette High School and Cascade and Shasta Middle Schools (these are not programmed by City of Eugene).

NATURAL AREAS

- Bethel has a large amount of natural area acreage in the West Eugene Wetlands and associated with Amazon Creek. Some of these areas are not currently accessible to the public because trails and trailheads have not been constructed yet, or access is limited due to sensitive habitats.
- Amazon Creek, the West Eugene Wetlands and the Fern Ridge bike path provide habitat connectivity, and opportunities for bike and pedestrian transportation and recreation.

Issues and Needs-

- Petersen Barn and Echo Hollow pool are both outdated and undersized, limiting the capacity and programming available to residents. Echo Hollow Pool is at risk of a building system failure that could close the facility for an extended period of time in the next 5-10 years.
- Availability of neighborhood parks in some parts of Bethel is limited:
 - There are two neighborhood park sites that have not been developed yet;
 - Four parks are in need of major renovation;
 - There is a need for two to three additional neighborhood park site acquisitions; and
 - Access improvements for walking and biking to some park are needed.
- Bethel does not have some types of specialty facilities found in other areas of Eugene, including a large community garden and spray play.
- Sports fields and gym space are in high demand. In particular is a need for a multi-field facility that can accommodate local use and tournaments.
- As a result of illicit camping, behaviors and activities, there are safety related concerns in park and open space land along Amazon Creek and the Fern Ridge bike path.

Vision Ideas-

The following ideas were identified as a result of community input and the needs assessment analysis. These are not formal proposals at this time, but ideas intended to promote additional community engagement and a discussion of priorities. **Are we on the right track? What have we missed?** These ideas are grouped under headings that represent the four key themes that came out of the needs assessment.

Care for and make the most of what we have:

- Fund long term maintenance and management of parks, trails and high priority habitats. This is needed both to take care of current facilities and parks, and also to allow expanding the system in the future to accommodate population growth.
- Renovate and expand Petersen Barn Community Center to add capacity and increase programming. Renovation could include:
 - Increased size of Preschool Classroom
 - Increased space for a large multipurpose room for fitness, dance and social events
 - Additional class room and meeting room
 - Increased storage space
- Renovate and expand Echo Hollow Pool to add capacity and increase programming. Renovation could include:
 - Repaired bulkhead separating two 25 meter pools
 - Adding outdoor leisure pool amenities such as slides, zero depth entry, therapy pool and spa
 - Increase size of fitness area
- Renovate and rehabilitate parks and specialty facilities (see chart).
- Restore and provide recreation access, as appropriate, to natural areas (see chart).
- Improve safety along Fern Ridge Path by providing additional lighting and vegetation management. Consider additional security measures such as park ambassadors, hosts or rangers.

Serve the entire community:

- Support the YMCA's efforts to build a new multi-purpose Community Center in Bethel Community Park. (This new facility would only be needed if there is no renovation of existing facilities).
- Build two new neighborhood parks on land already owned and identified for parks (Grasshopper Meadows, Royal Elizabeth Park).
- Build a spray play feature at Bethel Community Park and a Community garden (location TBD).
- Acquire two to three new neighborhood park sites in underserved areas and develop them.

Create more connections:

- Establish *Neighborhood Greenways*, making street crossing and route improvements to expand safe walking and biking access to neighborhood parks and other destinations.
- Build new segments of paved shared use paths along Jessen, Beltline, and connections to the Fern Ridge Path, totaling approximately 5 miles. For locations see, the [Eugene Transportation System Plan](#), Bicycling Projects Map.
 - Expand Fern Ridge bike path to Fir Butte Road
- Build new segments of soft surface trails, totaling approximately 13 miles. For locations see the [Eugene Trails Plan](#).
 - Connect the West Eugene Wetlands to the Ridgeline Trail system
 - Create a northerly "farm belt" connection that establishes an east/west trail from the Willamette River to the West Eugene Wetlands
 - Construct a running trail at Bethel Community Park and Golden Gardens Park

- Develop a water trail on lower Amazon Creek for canoeing and kayaking.

Build better partnerships:

- Maintain Recreation facility partnerships with the YMCA and Bethel School District on strategic use of resources to serve the Bethel neighborhood and / or other neighborhoods.
- Maintain partnership with Food for Lane County to provide services as part of the Summer Fun For All Program.
- Maintain partnerships with neighborhood groups and individuals that increase the cultural diversity of services at Petersen Barn Community Center, Echo Hollow Pool, Club Bethel at Cascade Middle School, and additional schools and parks in the neighborhood.
- Work with Bethel School District to maintain or enhance access to and upgrade school playgrounds as needed, to replace artificial turf at Meadowview School and Willamette High School, and to manage and maintain Shasta ballfields.
- Work with partners to build a multi-field sports complex that includes rectangular fields and ball diamonds, at Golden Gardens Park that can accommodate both community youth and adult league play, as well as hosting regional tournaments. Identify sponsorships and partners to leverage resources and limit City capital and operational expenditures to the extent possible.
- Partner with local health care organizations to provide health, wellness and rehabilitation services.
- Continue the Rivers to Ridges Partnership to protect and enhance the region’s land and water resources, including the West Eugene Wetlands.
- Continue to facilitate volunteer efforts in area parks, natural areas and recreation facilities.

System-wide Recommendations:

- Update and implement the Eugene Urban Forest Management Plan.
- Develop and implement a system-wide natural areas assessment and priorities plan.
- Develop and implement a city-wide restroom system master plan.
- Develop and implement a city-wide irrigation system water management plan.
- Develop and implement a comprehensive approach to locating spray play, nature play, inclusive play, and multi-generational playgrounds/exercise equipment.
- Improve accessibility for all ages and abilities.
- Implement comprehensive signage improvements.

Bethel Community Centers and Pools

See definitions of “major renovation,” “rehabilitate” and “maintain” below. “x” in a column indicates what type of project is needed; a,b,c in a column denotes the type of project and indicates a note below.

<i>Facility Type</i>	Develop new	Major renovation	Rehabilitate	Maintain
<i>Echo Hollow Pool</i>		a		
<i>Petersen Barn Community Center</i>		b		
<i>Multipurpose Community Center / Pool</i>	c			

Bethel Parks

Park Name	Develop new	Major renovation	Rehabilitate	Maintain
<i>Bethel Community Park</i>			d	
<i>Candlelight Park</i>				X
<i>Gilbert Park</i>				X
<i>Golden Gardens Park</i>	X			
<i>Grasshopper Meadow Park</i>	X			
<i>Irwin Park</i>			X	
<i>Lark Park</i>		X		
<i>Mangan Park</i>			X	
<i>Petersen Park</i>			X	
<i>Royal/Elizabeth</i>	X			
<i>State Street Park</i>		X		
<i>Trainsong Park</i>		X		
<i>Acquisition 1</i>	X			
<i>Acquisition 2</i>	X			
<i>Acquisition 3</i>	X			

Bethel Specialty Facilities

Facility Type	Develop new	Major renovation	Rehabilitate	Maintain
<i>Spray play</i>	X			
<i>Community garden</i>	X			
<i>Candlelight Dog park</i>				X
<i>Bethel Skate park</i>				X
<i>Trainsong Skate park</i>				X
<i>Willamette HS Turf field</i>		2018-2020		
<i>Meadowview Turf field</i>		2018-2020		
<i>Shasta Ballfields(Bethel SD)</i>		X		
<i>Petersen Park fields</i>				X
<i>Willamette HS Tennis Courts</i>				X
<i>Golden Gardens Sports Complex</i>	e			

- Develop new Build new park or facility. Master plans are needed before development.
- Major renovation Developed parks in overall poor condition and in need of major renovation within a 10 year timeframe.
- Rehabilitate Developed parks with one or two basic features in poor condition and in need of rehabilitation within a 10 year timeframe.
- Maintain Developed parks in good condition requiring only basic maintenance and minor repairs.
- Notes:
- a. Add outdoor recreation amenities such as slides, 0-depth entry, therapy pool and spa, per master plan.
 - b. Develop and implement master plan to improve capacity of Petersen Barn Community Center

- c. Build new facility only in partnership with YMCA and if Echo Hollow Pool and Petersen Barn are not renovated.
- d. Bethel CP rehabilitation to include Spray play feature.
- e. Market feasibility study is underway.

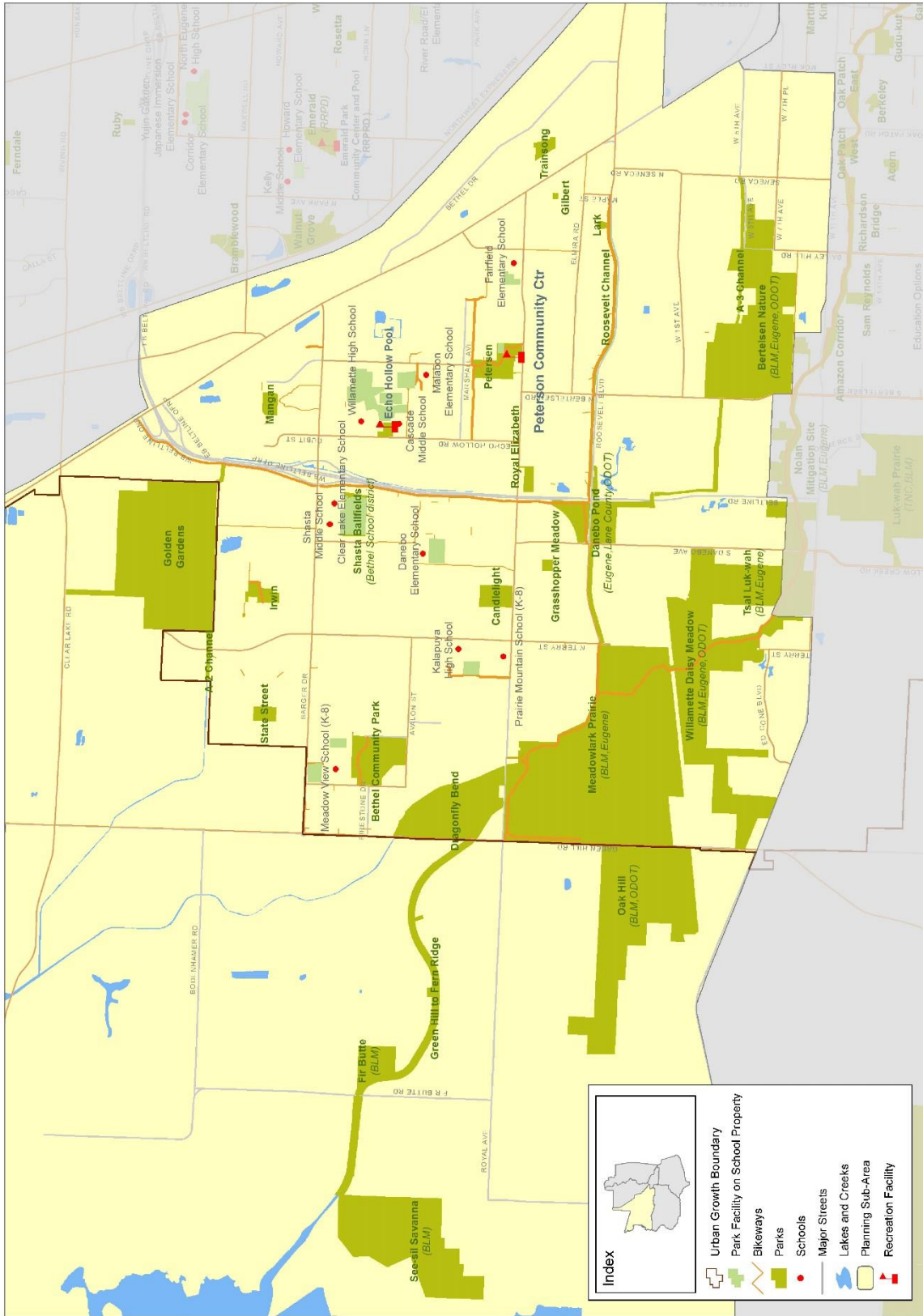
Bethel Natural Areas

Natural Area Name	Trails and Trailheads		Habitat and Ecological Function	
	Develop New	Renovate/ Maintain	Restore	Maintain
<i>Amazon</i>				
A-2 Channel				X
A-3 Channel	X			X
Amazon Creek	X: water trail	X		X
Green Hill to Fern Ridge	X	X	a	X
<i>Greenhill Tributary</i>				X
<i>Marshall Channel</i>				X
<i>Roosevelt Channel</i>				X
<i>West Eugene Wetlands</i>				
Bertelsen Nature Park (BLM; CoE; ODOT)	X	X		X
Dragonfly Bend				X
Fir Butte (BLM)			X	
Meadowlark Prairie		X		X
Willamette Daisy Meadow			a	X
<i>Neighborhood Natural Areas</i>				
Bethel Community Park	X			X
Candlelight Park				X
Gilbert Park				X
Golden Gardens Park	X		b	X
Irwin Park				X
Trainsong Park				X

- Develop new Build trails, trailheads and other recreation amenities to facilitate public access. Management Plans are needed before development.
- Renovate/ Maintain Renovate existing trails, trailheads and other recreation amenities within a 10 year timeframe or perform basic general maintenance as needed. (R= renovate, M= maintain).
- Restore Poor condition for habitat that requires extensive restoration of natural habitat within a 10 year timeframe.
- Maintain Requires only basic habitat enhancement or general maintenance.
- Notes:
- a. Developing and enhancing nectar plots for federally listed Fender’s Blue Butterfly in partnership with adjacent BLM land management.
 - b. Rehabilitate portion of waterway and turtle habitat during development of new developed park amenity. Maintain portion of park as natural areas.

BETHEL PLANNING SUB-AREA INVENTORY

Name	Property Owner	Agency responsible for Maintenance	Total Acres	City Owned
A-2 Channel	City of Eugene	City of Eugene	3.7	3.7
A-2 Channel	City of Eugene	City of Eugene	1.4	1.4
A-3 Channel	City of Eugene	City of Eugene	21.7	21.7
Amazon Corridor	City of Eugene	City of Eugene	6.3	6.3
Amazon Corridor	City of Eugene	City of Eugene	6.3	6.3
Bertelsen Nature Park	Bureau of Land Management; City of Eugene; ODOT	Bureau of Land Management	168.5	61.0
Bethel Community Park	City of Eugene	City of Eugene	35.2	35.2
Candlelight Park	City of Eugene	City of Eugene	11.6	11.6
Danebo Pond	City of Eugene	Lane County Public Works	34.4	34.4
Dragonfly Bend	City of Eugene	City of Eugene	78.2	78.2
Echo Hollow Pool	City of Eugene	City of Eugene	2.7	2.7
Fir Butte	Bureau of Land Management	Bureau of Land Mgmt.	18.4	
Gilbert Park	City of Eugene	City of Eugene	0.5	0.5
Golden Gardens Park	City of Eugene	City of Eugene	222.8	222.8
Grasshopper Meadow Park	City of Eugene	City of Eugene	2.0	2.0
Green Hill to Fern Ridge	City of Eugene	City of Eugene	54.7	54.7
Irwin Park	City of Eugene	City of Eugene	8.1	8.1
Lark Park	City of Eugene	City of Eugene	1.2	1.2
Mangan Park	City of Eugene	City of Eugene	5.5	5.5
Meadowlark Prairie	Bureau of Land Management; City of Eugene	Bureau of Land Management; City of Eugene	406.5	127.9
Oak Hill	Bureau of Land Management; Oregon Dept. of Trans.	Bureau of Land Mgmt.; Oregon Dept. of Trans.	194.4	
Petersen Park	City of Eugene	City of Eugene	18.7	18.7
Roosevelt Channel	City of Eugene	City of Eugene	20.4	20.4
Royal Elizabeth Park	City of Eugene	City of Eugene	3.5	3.5
See-sil Savanna	Bureau of Land Management	Bureau of Land Mgmt.	142.2	
Shasta Ballfields	Bethel School District	City of Eugene	17.0	
State Street Park	City of Eugene	City of Eugene	5.4	5.4
Trainsong Park	City of Eugene	City of Eugene	5.0	5.0
Willamette Daisy Meadow	Bureau of Land Management; City of Eugene	Bureau of Land Management; City of Eugene	179.1	24.0
			1,675.3	762.1



Bethel Sub-Area

1 Mile
 0 0.25 0.5
 June, 2016
 Scale: 1:40,000

