

## **WILLAKENZIE PARKS AND RECREATION**

Eugene’s Parks and Recreation system is categorized into six neighborhood planning sub-areas. This report addresses parks and recreation facilities and needs in the Willakenzie area. Geographically based planning allows us to look at the unique characteristics and opportunities of each area and how facilities and services are distributed throughout the community.

### **Existing Resources and Facilities-**

The Willakenzie sub-area currently has 1,063 acres of parks, recreation and open space (including partner-owned lands and private golf courses), with 655 of those acres owned by the City of Eugene. Willakenzie has the following distinct features:

#### *RECREATION SERVICES*

- Sheldon Community Center provides recreational services and programming that include:
  - Preschool childcare
  - Before and after school care
  - Youth classes and camps
  - Summer Fun For All at Cal Young Sports Park (free recreation opportunities for youth in area parks)
  - Special events
  - Adult fitness
  - Senior and adult classes and trips
- Sheldon Pool provides a year round indoor aquatic facility and small fitness center. Services and programming include:
  - Water fitness classes & lap swimming
  - Recreation swims
  - Swim lessons
  - Lifeguard certification classes
  - Youth camps
  - Swim team practice facility for clubs and high schools
  - Water polo practice facility for club teams

#### *PARKS*

- One metropolitan, four community, and twelve neighborhood parks serve the area.
  - Alton Baker Park is one of Eugene’s largest metropolitan parks and serves as a community destination for large community events.
  - Sheldon Youth Sports Park, Cal Young Youth Sports Park and Ascot Park, are co-managed with School District 4J, and function as community parks for Willakenzie.
  - Striker Field is currently designated a community park but has been requested by neighbors to be re-classified as a neighborhood park.
  - Neighborhood parks in Willakenzie are: Marche Chase Park, Country Lane Park, Oakmont Park, Bond Lane Park, Tandy Turn Park, Willakenzie Park, Brewer Park, Gilham Park, Creekside Park, and Crescent Park.
  - The undeveloped neighborhood park sites in this area are: Wildwood Park and Chase Commons Park.

- Specialty facilities include:
  - Pre's Trail;
  - Alton Baker Community Garden;
  - Hays Memorial Tree Garden;
  - Alton Baker Dog Park;
  - Cuthbert Amphitheater;
  - Alton Baker Boat Ramp;
  - 18-hole Disc golf course in Alton Baker Park (temporary);
  - Facilities for large picnics and gatherings;
  - Cal Young Skate Park and
  - Oakmont Spray Play.
- In addition to playgrounds at parks, school playgrounds are accessible at Gilham Elementary, Buena Vista Elementary, Bertha Holt Elementary, and Willagillespie Elementary Schools.
- Three private golf courses are located within Willakenzie that offer additional open space and recreation opportunities.

### *SPORTS FACILITIES*

- Ascot Park is a 6-field softball/soccer complex co-owned by Eugene School District 4J and the City of Eugene.
- Artificial turf fields (2) are available at Sheldon High School and Cal Young Middle School.
- All-weather surface tracks are available at Sheldon High School and Cal Young Middle School.
- Tennis courts (4) are available at Sheldon High School.
- Indoor gyms for basketball and volleyball are available at Sheldon and Marist High Schools and Cal Young and Monroe Middle Schools. An additional gym is located at Sheldon Community Center but is undersized for programmed use.

### *NATURAL AREAS*

- Delta Ponds and the Whilamut Natural Area are large scale natural areas that have undergone extensive habitat restoration in recent years.
- Alton Baker Park, East Bank Park and Delta Ponds provide the Willakenzie area with good habitat connectivity, bike/pedestrian transportation options and recreation opportunities.

### **Issues and Needs-**

- Sheldon Community Center and Pool are both outdated and undersized facilities, limiting the capacity and programming available to residents. The HVAC and electrical systems of both the pool and community center are in need of replacement.
- Availability of or access to neighborhood parks in some parts of Willakenzie is limited:
  - There are three neighborhood park sites that have not been developed yet;
  - There is one neighborhood park site in need of major renovation;
  - There is a need for up to three additional neighborhood park site acquisitions; and
  - Access improvements for walking and biking are needed to some parks.
- Sports fields and gym space are in high demand across the community. In particular is a need for a multi-field facility that can accommodate local use and tournaments.

- As a result of illicit camping, and other illicit behaviors and activities, there are safety related concerns in Alton Baker Park, Delta Ponds and East Bank Park on the Willamette River.
- The proposed loop trail through the Delta Ponds site is missing a bridge that would complete the loop, increase legitimate site use, and leverage previous investments in the site.
- Acquiring additional land along the Willamette River, north of Beltline and along the south bank of the McKenzie River are long-range visions that are contingent on future land acquisition and could involve building on existing partnerships (See the Willamette River Vision and Action Plan).
- Neighbors and the Northeast Neighbors Association have asked that Striker Field be re-designated as a neighborhood or community park without lighted sports fields.

## Vision Ideas-

The following ideas were identified as a result of community input and the needs assessment analysis. These are not formal proposals at this time, but ideas intended to promote additional community engagement and a discussion of priorities. **Are we on the right track? What have we missed?** These ideas are grouped under headings that represent the four key themes that came out of the needs assessment.

*Care for and make the most of what we have:*

- Fund long term maintenance and management of parks, trails and high priority habitats.
- Renovate and expand Sheldon Community Center and consolidate with Sheldon Pool. Community Center renovations could add capacity and increase programming with:
  - Increased size of Preschool Classroom
  - Increased space for a large multipurpose room for fitness, dance and social events.
  - Additional classroom and meeting room
  - Increased storage space
- Renovate and expand Sheldon Pool and consolidate with Sheldon Community Center. Pool renovations could include:
  - Outdoor leisure pool amenities such as slides, zero depth entry, therapy pool and spa
  - Increase size of fitness area
- Renovate and rehabilitate parks and specialty facilities (see chart below).
- Improve safe access to the Willamette River for swimming, fishing, paddling and nature viewing, while maintaining or improving habitat for fish and wildlife.
- Renovate the Alton Baker Canoe Canal to improve habitat connection to the Willamette, improve water quality and provide increased recreational uses such as whitewater features.
- Restore and provide recreation access (as appropriate) to natural areas (see chart below).
- Improve safety along the Willamette River corridor by providing additional lighting and vegetation management. Consider additional security measures such as park ambassadors, hosts or rangers.

*Serve the entire community:*

- Build three new neighborhood parks on land already owned and identified for parks (Striker Field (if re-designated as Neighborhood Park), Wildwood Park and Chase Commons Park).
- Add play area(s) within East Bank Park (location(s) TBD).
- Add specialty recreation amenities to sub-area, including:
  - A regional playground at Alton Baker Park.
- Acquire up to three new neighborhood park sites in underserved areas and develop them.

*Create more connections:*

- Establish *Neighborhood Greenways*, making street crossing and route improvements to expand safe walking and biking access to neighborhood parks and other destinations.
- Build the missing bridge in the Delta Ponds loop trail and study options for pedestrian connections to the north.
- Build paved shared use paths and grade separated crossing improvements as identified in, the [Eugene Transportation System Plan](#), Bicycling Projects Map.
- Build new trails, totaling approximately three miles. For locations see, [Eugene Trails Plan](#):
  - Along Patterson Slough from MLK Blvd to Garden Way.
  - Along the east side of Dedrick Slough from Delta Ponds to Goodpasture Island Road.
  - Complete looped path, including bridge at Delta Ponds.
  - A running trail that runs parallel to the East Bank Path from Owosso Bridge to Delta Ponds.
- Conduct a feasibility study of potential future trail options and habitat restoration opportunities along Willamette Riverfront property north of Beltline and along the McKenzie River to increase recreation opportunities and access to nature for residents in north Willakenzie.
- Seek opportunities to acquire and provide access to large natural areas providing habitat and transportation/trail connectivity on the north side of Eugene. This planning should be conducted with adjacent neighborhood planning sub-areas.

*Build better partnerships:*

- Work with 4J to update school playgrounds as needed and to replace artificial turf at Cal Young Middle School and Sheldon HS. Renovate tennis courts at Sheldon HS.
- Partner with 4J and local efforts to improve track and field facilities at Sheldon HS for increased community access.
- Partner with local health care organizations to provide health, wellness and rehabilitation services.
- Continue work with the Whilamut Citizen Planning Committee to protect and enhance the natural areas within the Whilamut Natural Area in East Alton Baker Park.
- Continue work with The Friends of Pre's Trail to maintain and improve the running trail.
- Continue to facilitate volunteer efforts in area parks, natural areas and recreation facilities.
- Continue the Rivers to Ridges Partnership to protect and enhance the region's land and water resources.

*System-wide Recommendations:*

- Update and implement the Eugene Urban Forest Management Plan.
- Develop and implement a system-wide natural areas assessment and plan.
- Develop and implement a city-wide restroom system master plan.
- Develop and implement a city-wide irrigation system water management plan.
- Develop and implement a comprehensive approach to locating spray play, nature play, inclusive play, and multi-generational playgrounds/exercise equipment.
- Improve accessibility for all ages and abilities.
- Implement comprehensive signage improvements.

## Willakenzie Community Centers and Pools

See definitions of “major renovation,” “rehabilitate” and “maintain” below. “x” in a column indicates what type of project is needed; a,b,c,etc. in a column denotes the type of project and indicates a note below.

<b>Facility Type</b>	<b>Develop new</b>	<b>Major renovation</b>	<b>Rehabilitate</b>	<b>Maintain</b>
<i>Sheldon Community Center</i>		a		
<i>Sheldon Pool</i>		b		

## Willakenzie Parks

<b>Park Name</b>	<b>Develop new</b>	<b>Major renovation</b>	<b>Rehabilitate</b>	<b>Maintain</b>
<i>Alton Baker Park</i>		c		
<i>Ascot Park</i>	d		X	
<i>Bond Lane Park</i>				X
<i>Brewer Park</i>			X	
<i>Cal Young Sports Park</i>			X	
<i>Chase Commons Park</i>	X			
<i>Country Lane Park</i>				X
<i>Creekside Park</i>				X
<i>Crescent Park</i>			X	
<i>Gilham Park</i>			X	
<i>Marche Chase Park</i>				X
<i>Oakmont Park</i>			X	
<i>Sheldon Sports Park</i>		X		
<i>Striker Field</i>	X			
<i>Tandy Turn Park</i>		X		
<i>Wildwood Park</i>	X			
<i>Willakenzie Park</i>				X
<i>Acquisition 1</i>	X			
<i>Acquisition 2</i>	X			
<i>Acquisition 3</i>	X			

## Willakenzie Specialty & Sports Facilities

<b>Facility Type</b>	<b>Develop new</b>	<b>Major renovation</b>	<b>Rehabilitate</b>	<b>Maintain</b>
<i>Oakmont Park Spray Play</i>				X
<i>Alton Baker Dog Park</i>				X
<i>Alton Baker Community Garden</i>			X	
<i>Sheldon HS Turf Field</i>		2022		
<i>Cal Young Turf Field</i>		2016-2018		

<b>Facility Type</b>	<b>Develop new</b>	<b>Major renovation</b>	<b>Rehabilitate</b>	<b>Maintain</b>
<i>Ascot Park Ballfields</i>				X
<i>Running Trails</i>	X			X
<i>Sheldon HS Track and Field</i>		X		
<i>Sheldon HS Tennis Courts</i>		X		
<i>Alton Baker Disc Golf</i>				X
<i>Alton Baker Regional Playground</i>	X			
<i>Cuthbert Amphitheater</i>		X		
<i>Hayes Memorial Tree Garden</i>				X

Develop new Build new park or facility. Master plans are needed before development.

Major renovation Developed parks in overall poor condition and in need of major renovation within a 10 year timeframe.

Rehabilitate Developed parks with one or two basic features in poor condition and in need of rehabilitation within a 10 year timeframe.

Maintain Developed parks in good condition requiring only basic maintenance and minor repairs.

Notes:

- a. Consolidate reception facilities of Sheldon Community Center and Sheldon Pool to realize increased efficiencies and expand space for programming per master plan.
- b. Add outdoor recreation amenities such as slides, 0-depth entry, therapy pool and spa, per master plan.
- c. Update West Alton Baker Park masterplan in anticipation of major renovation and improved access to the river.
- d. Add playground to Ascot Park.

## Willakenzie Natural Areas

<b>Natural Area Name</b>	<b>Trails and Trailheads</b>		<b>Habitat and Ecologic Function</b>	
	<b>Develop New</b>	<b>Renovate/ Maintain</b>	<b>Restore</b>	<b>Maintain</b>
<i>Willamette River</i>				
Delta Ponds	a			X
Debrick Slough	X			X
Canoe Canal	b		X	
East Bank	X			X
North Bank				X
Patterson Slough	X			X
Whilamut Natural Area				c
<i>Other</i>				
Ascot Creek				X
Gilham Creek				X
Gillespie Butte		M		X
North Beltline Floodway				X
Q Street Floodway				X
Sorrel Pond		R		X
<i>Neighborhood Natural Areas</i>				
Alton Baker Park				X

Bond Lane Park		R		X
Chase Commons Park				X
Creekside Park				X
Gilham Park		M		X
Marche Chase Park				X
Oakmont Park		M		X

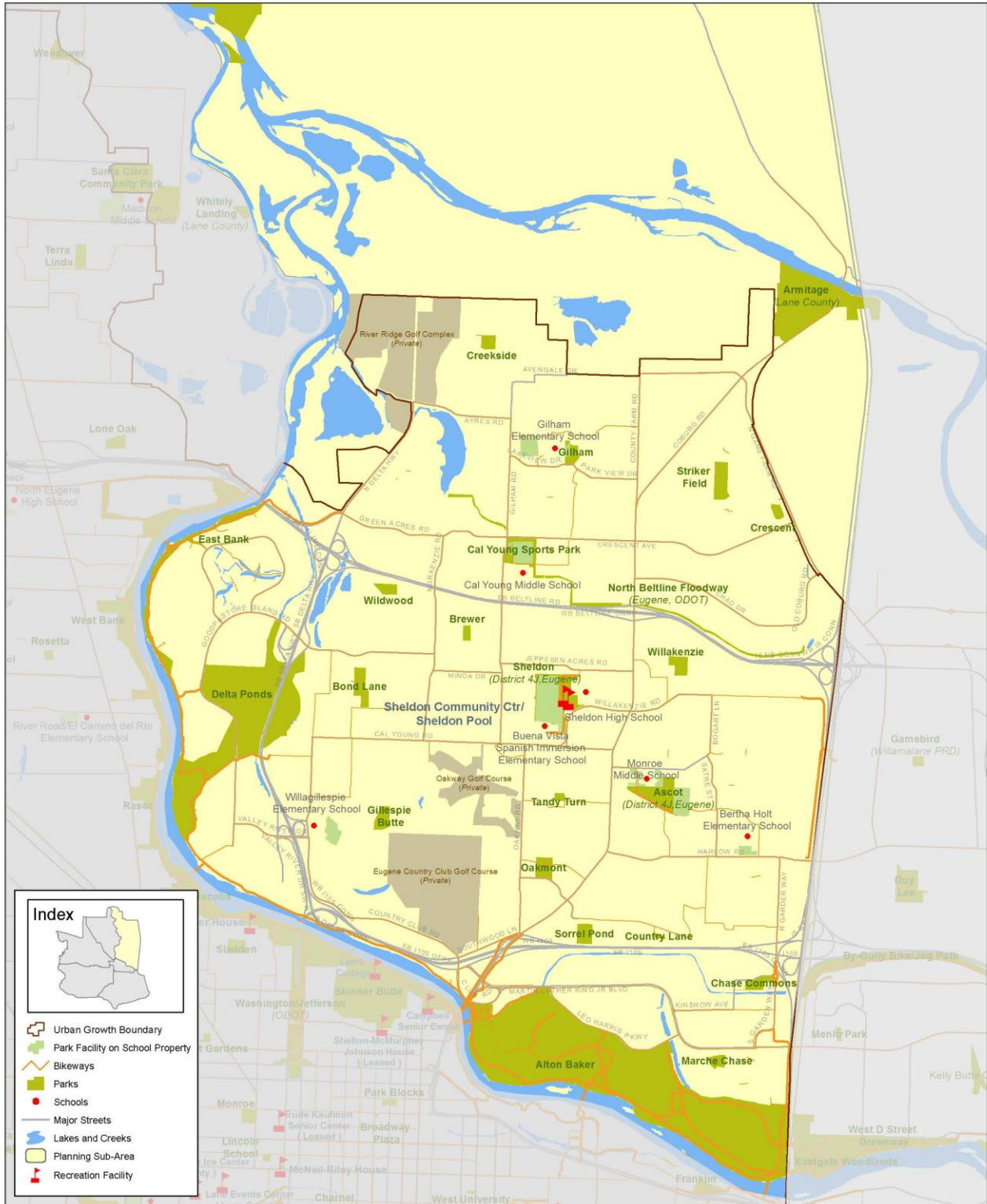
- Develop new            Build trails, trailheads and other recreation amenities to facilitate public access. Management Plans are needed before development.
- Renovate/ Maintain    Renovate existing trails, trailheads and other recreation amenities within a 10 year timeframe or perform basic general maintenance as needed. (R= renovate, M= maintain).
- Restore                 Poor condition for habitat that requires extensive restoration within a 10 year timeframe.
- Maintain                Requires only basic habitat enhancement or general maintenance.
- Notes
- a. Build bridge to complete loop trail at Delta Ponds.
  - b. Improve canoe canal for paddling, including whitewater features.
  - c. Consider need to update master plan for Whilamut Natural Area (East Alton Baker Park Plan)

DRAFT

## WILLAKENZIE PLANNING SUB-AREA INVENTORY

Name	Property Owner	Agency Responsible for Maintenance	Total Acres	City Owned
Alton Baker Park	City of Eugene	City of Eugene	375.2	375.2
Armitage Park	Lane County Parks	Lane County Parks	66.6	
Ascot Park	City of Eugene; Eugene School District 4J	City of Eugene	23.6	14.0
Bond Lane Park	City of Eugene	City of Eugene	7.1	7.1
Brewer Park	City of Eugene	City of Eugene	1.9	1.9
Cal Young Sports Park	Eugene School District 4J	City of Eugene	10.9	
Chase Commons Park	City of Eugene	City of Eugene	4.4	4.4
Country Lane Park	City of Eugene	City of Eugene	0.7	0.7
Creekside Park	City of Eugene	City of Eugene	3.3	3.3
Crescent Park	City of Eugene	City of Eugene	2.3	2.3
Cuthbert Amphitheater	City of Eugene	City of Eugene	3.1	3.1
Delta Ponds	City of Eugene	City of Eugene	154.4	154.4
East Bank	City of Eugene	City of Eugene	11.5	11.5
East Bank	City of Eugene	Private	12.6	12.6
East Bank	City of Eugene	City of Eugene	1.7	1.7
Eugene Country Club Golf Course	Private	Private	144.3	
Gilham Park	City of Eugene	City of Eugene	4.4	4.4
Gillespie Butte	City of Eugene	City of Eugene	5.0	5.0
Marche Chase Park	City of Eugene	City of Eugene	3.1	3.1
North Beltline Floodway	City of Eugene	City of Eugene	6.6	6.6
North Beltline Floodway	Oregon Dept. of Transportation	City of Eugene	3.0	
North Beltline Floodway	Eugene School District 4J	City of Eugene	2.8	
North Beltline Floodway	City of Eugene	City of Eugene	2.8	2.8
North Beltline Floodway	City of Eugene	City of Eugene	2.2	2.2
Oakmont Park	City of Eugene	City of Eugene	5.8	5.8
Oakway Golf Course	Private	Private	46.5	
River Ridge Golf Course	Private	Private	104.0	
Sheldon Comm Center	City of Eugene	City of Eugene	2.4	2.4
Sheldon Pool	City of Eugene	City of Eugene	1.5	1.5
Sheldon Sports Park	City of Eugene; Eugene School District 4J	City of Eugene	25.7	5.1
Sorrel Pond	City of Eugene	City of Eugene	5.1	5.1
Striker Field	City of Eugene	City of Eugene	8.6	8.6
Tandy Turn Park	City of Eugene	City of Eugene	1.3	1.3
Wildwood Park	City of Eugene	City of Eugene	3.4	3.4
Willakenzie Park	City of Eugene	City of Eugene	5.0	5.0
			<b>1063.0</b>	<b>654.6</b>





# Willakenzie Sub-Area

0 0.25 0.5 1 Mile



June, 2016  
Scale: 1:40,000