

SOUTHWEST EUGENE PARKS AND RECREATION

Eugene's Parks and Recreation system is categorized into six neighborhood planning sub-areas. This report addresses parks and recreation facilities and needs in the Southwest Eugene area. Geographically based planning allow us to look at the unique characteristics and opportunities of each area and how facilities and services are distributed throughout the community.

Existing Resources and Facilities-

Southwest Eugene currently has 1,712 acres of parks, recreation and open space (including partner lands) with 725 of those acres owned by the City of Eugene. The vast majority of these acres are natural areas rather than developed parks. Southwest has the following distinct features:

RECREATION SERVICES

- Recreation provides services at Churchill Park as one of the Summer Fun For All Program Sites, providing free recreation opportunities for youth in area parks.

PARKS

- One community park and eight neighborhood parks serve the area.
 - The Churchill Youth Sports Park, located on the campus of Churchill High School, has many park amenities and functions as the community park for Southwest.
 - Neighborhood Parks in the area are: Videra Park, Skyview Park, Acorn Park, Berkeley Park, and Martin Luther King Jr. Park
 - The area has three undeveloped neighborhood park sites: Hawkins Heights Park, Sam Reynolds Park, and Warbling Creek Park.
- In addition to playgrounds at parks, school playgrounds are accessible at McCornack Elementary.
- Specialty facilities include:
 - Community gardens at Matthews and Huerto de la Familia garden; and
 - Churchill skatepark at Churchill Youth Sports Park.
- Many paths or access ways exist throughout the neighborhood that are owned by private homeowner associations.

SPORTS FACILITIES

- An artificial turf field is available at Churchill High School.
- An all-weather surface track is available at Churchill High School.
- Tennis courts (4) are available at Churchill High School.
- Indoor gyms for basketball and volleyball are available at Churchill High School and Kennedy Middle Schools.

NATURAL AREAS

- Southwest has a large amount of natural area acreage in the Ridgeline, West Eugene Wetlands and associated with Amazon Creek. Some of these areas are not accessible to the public because trails and trailheads have not been constructed yet, or access is limited due to sensitive habitats.

- Amazon Creek, the West Eugene Wetlands and the Fern Ridge bike path provides habitat connectivity, and transportation and recreation opportunities.

Issues and Needs-

- This Southwest neighborhood lacks a community center and pool located within two miles. The high school swim team travels to Echo Hollow Pool to practice, and residents go to Echo Hollow or Amazon Pool in the summer for swims lessons, fitness, and recreation swims.
- Availability of neighborhood parks in some parts of Southwest is limited:
 - There are three neighborhood park sites that have not been developed yet;
 - Two parks are in need of major renovation;
 - There is a need for two-three additional neighborhood park site acquisitions; and
 - Access improvements for walking and biking are needed to some parks.
- Southwest lacks some specialty facilities, including a dog park and spray play park.
- Sports fields and gym space are in high demand community-wide. In particular is a need for a multi-field facility that can accommodate local use and tournaments.
- As a result of illicit camping, and other illicit behaviors and activities, there are safety related concerns along Amazon Creek and the Fern Ridge bike path.
- Existing Ridgeline properties lack access via trails and trailheads.
- There are gaps in the Ridgeline Park system (See [Ridgeline Area Open Space Plan](#)), including:
 - a 2 mile gap between Wild Iris Ridge and Blanton Ridge;
 - a 1.5 mile gap between Wild Iris Ridge and Murray Hill; and
 - a 2 mile gap between Murray Hill and Meadowlark Prairie.

Vision Ideas-

The following ideas were identified as a result of community input and the needs assessment analysis. These are not formal proposals at this time, but ideas intended to promote additional community engagement and a discussion of priorities. Are we on the right track? What have we missed? These ideas are grouped under headings that represent the four key themes that came out of the needs assessment.

Care for and make the most of what we have:

- Fund long term maintenance and management of parks, trails and high priority habitats.
- Renovate and rehabilitate parks and specialty facilities (see chart below).
- Restore and provide recreation access (as appropriate) to natural areas (see chart below).
- Improve safety along Fern Ridge Path by providing additional lighting and vegetation management. Consider additional security measures such as park ambassadors, hosts or rangers.

Serve the entire community:

- Build a new community center and pool facility in Southwest. Explore locations and potential partnerships with other community organizations to leverage resources and limit capital and operational costs to the extent possible.
- Build three new neighborhood parks on land already owned and identified for parks (Sam Reynolds, Hawkins Heights and Warbling Creek).
- Locate a dog park and build a spray play feature in Southwest.

- Acquire two-three new neighborhood park sites in underserved areas and develop them.

Create more connections:

- Establish *Neighborhood Greenways*, making street crossing and route improvements to expand walking and biking access to neighborhood parks and other destinations.
- Build new connections to the Fern Ridge Path. For locations see, the [Eugene Transportation System Plan](#), Bicycling Projects Map.
- Develop a water trail on lower Amazon Creek for canoeing and kayaking.
- Acquire additional lands to connect the Ridgeline Park System. Develop with trails and trailheads as needed:
 - Blanton Ridge/ South Eugene Meadows to Wild Iris Ridge
 - Wild Iris Ridge to Murray Hill
 - Murray Hill to Meadowlark Prairie
- Build new segments of soft surface trails, totaling approximately 18 miles. For locations see the [Eugene Trails Plan](#).
 - Blanton Ridge/South Eugene Meadows west to Wild Iris Ridge
 - From Wild Iris Ridge, west towards Murray Hill
 - From Wild Iris Ridge, north towards the Fern Ridge Path
 - From Murray Hill, northwest towards Meadowlark Prairie, and Oak Hill

Build better partnerships:

- Partner with the YMCA and 4J School District on plans to increase recreation facilities in the area.
- Work with 4J to update school playgrounds as needed and to replace artificial turf field and renovate tennis courts at Churchill High School.
- Partner with local health care organizations to provide health, wellness and rehabilitation services.
- Continue the Rivers to Ridges Partnership to protect and enhance the region's land and water resources.
- Continue to facilitate volunteer efforts in area parks, natural areas and recreation facilities.

System-wide Recommendations:

- Update and implement the Eugene Urban Forest Management Plan..
- Develop and implement a system-wide natural areas assessment and plan.
- Develop and implement a city-wide restroom system master plan.
- Develop and implement a city-wide irrigation system water management plan.
- Develop and implement a comprehensive approach to locating spray play, nature play, inclusive play, and multi-generational playgrounds/exercise equipment.
- Improve accessibility for all ages and abilities.
- Implement comprehensive signage improvements.

Southwest Community Centers and Pools

See definitions of “major renovation,” “rehabilitate” and “maintain” below. “x” in a column indicates what type of project is needed; a,b,c,etc. in a column denotes the type of project and indicates a note below.

Facility Type	Develop new facility	Major renovation	Rehabilitate	Maintain
<i>Community Center</i>	X			
<i>Pool</i>	X			

Southwest Parks

Park Name	Develop new park/ amenity	Major renovation	Rehabilitate	Maintain
<i>Acorn Park</i>				X
<i>Berkeley Park</i>		X		
<i>Churchill Youth Sports Park</i>		X		
<i>Hawkins Heights</i>	X			
<i>MLK Jr</i>		X		
<i>Sam Reynolds</i>	X			
<i>Skyview</i>			X	
<i>Warbling Creek</i>	X			
<i>Videra Park</i>				X
<i>New Acquisition 1</i>	X			
<i>New Acquisition 2</i>	X			
<i>New Acquisition 3</i>	X			

Southwest Specialty Facilities

Facility Type	Develop new facility	Major renovation	Rehabilitate	Maintain
<i>Spray play</i>	X			
<i>Dog park</i>	X			
<i>Churchill Skate park</i>				X
<i>Matthews Comnty Garden</i>			X	
<i>Churchill HS Turf fields</i>		2022		
<i>Churchill HS Tennis courts</i>		X		

Develop new
Major renovation

Build new park or facility. Master plans are needed before development.
Developed parks in overall poor condition and in need of major renovation within a 10 year timeframe.

Rehabilitate

Developed parks with one or two basic features in poor condition and in need of rehabilitation within a 10 year timeframe.

Maintain
Notes:

Developed parks in good condition requiring only basic maintenance and minor repairs.

Southwest Natural Areas

<i>Natural Area Name</i>	Trails and Trailheads		Habitat and Ecological Function	
	Develop New	Renovate/ Maintain	Restore	Maintain
<i>Ridgeline</i>				
<i>Bailey Hill</i>	a			X, access needed
<i>Gimpl Ridge</i>	a			X
<i>Murray Hill</i>	X		X	
<i>Wild Iris Ridge</i>	X		X	
<i>Amazon</i>				
<i>Amazon Creek</i>	X: water trail			X
<i>Garfield Park</i>				X
<i>Gudukut</i>	X			X
<i>Oak Patch East</i>				X
<i>Oak Patch West</i>				X
<i>Richardson Bridge</i>				X
<i>Wetlands</i>				
<i>Coyote Prairie</i>			X	X
<i>Nolan Mitigation Site</i>				X
<i>Willow Corner</i>	b			X
<i>Neighborhood Natural Areas</i>				
<i>Melvin Miller</i>	c			X
<i>Skyview</i>				X
<i>Hawkins Heights</i>				X
<i>Videra Park</i>				X

Develop new

Build trails, trailheads and other recreation amenities to facilitate public access. Management Plans are needed before development.

Renovate/ Maintain

Renovate existing trails, trailheads and other recreation amenities within a 10 year timeframe or perform basic general maintenance as needed. (R= renovate, M= maintain).

Restore

Poor condition for habitat that requires extensive restoration within a 10 year timeframe.

Maintain

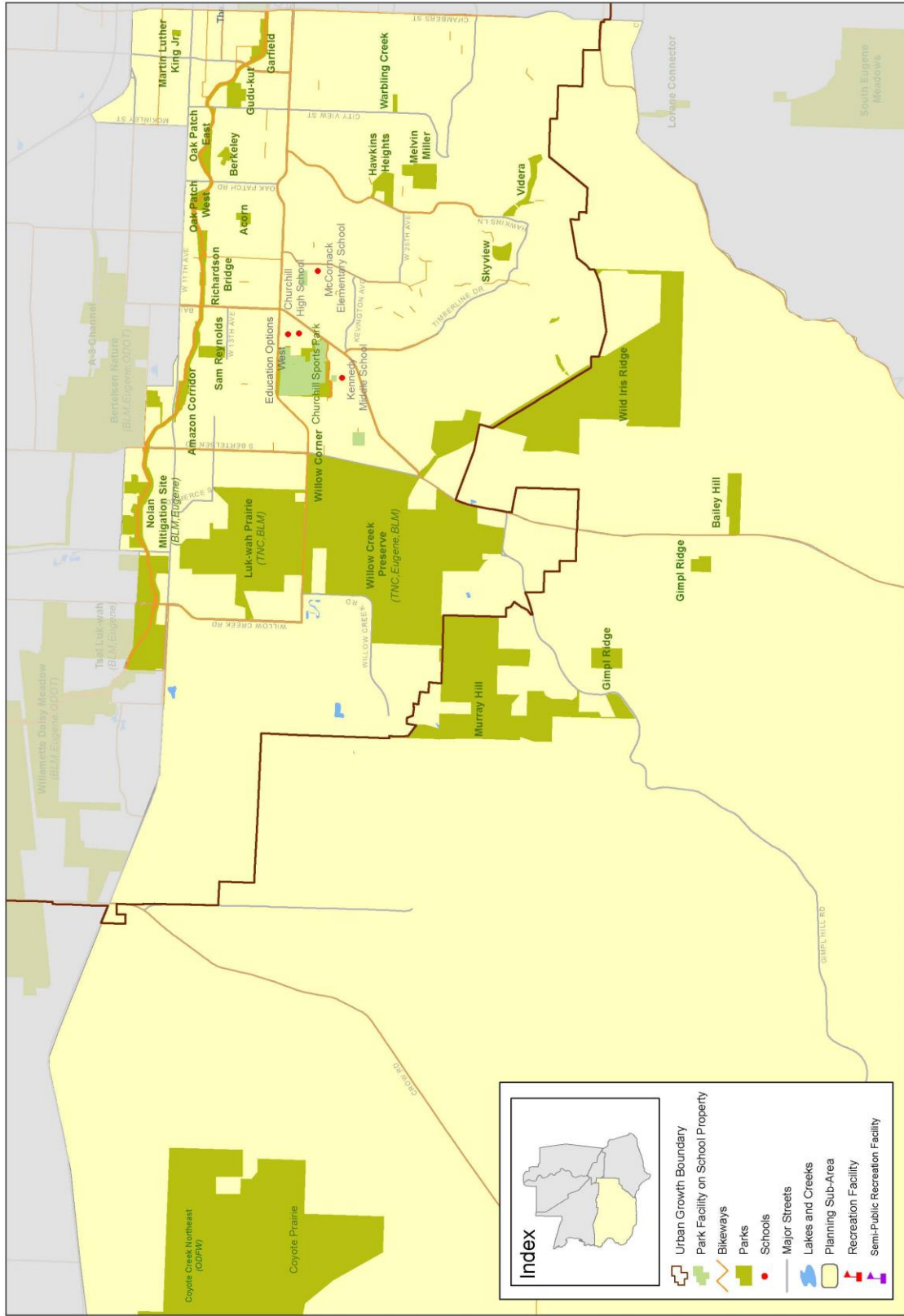
Requires only basic habitat enhancement or general maintenance.

Notes:

- a. Trail construction when connected to Ridgeline System through future acquisition
- b. Willow Corner could be part of a connection between the Ridgeline and Fern Ridge Bike Path
- c. Potential for nature play

SOUTHWEST PLANNING SUB-AREA INVENTORY

Name	Property Owner	Agency Responsible for Maintenance	Total Acres	City Owned
Acorn Park	City of Eugene	City of Eugene	2.6	2.6
Amazon Corridor	City of Eugene	City of Eugene	6.6	6.6
Amazon Corridor	City of Eugene	City of Eugene	29.6	29.6
Bailey Hill	City of Eugene	City of Eugene	13.0	13.0
Berkeley Park	City of Eugene	City of Eugene	2.4	2.4
Churchill Sports Park	Eugene School District 4J	City of Eugene; Eugene School Dist. 4J	40.4	
Coyote Prairie	City of Eugene	City of Eugene	241.6	241.6
Coyote Creek Northeast	ODFW	ODFW	229.1	
Garfield Park	City of Eugene	City of Eugene	4.7	4.7
Gimpl Ridge	City of Eugene	City of Eugene	14.9	14.9
Gudu-kut	City of Eugene	City of Eugene	6.4	6.4
Hawkins Heights Park	City of Eugene	City of Eugene	7.9	7.9
Luk-wah Prairie	Bureau of Land Management	Bureau of Land Mgmt.	83.7	
Martin Luther King Jr. Park	City of Eugene	City of Eugene	0.8	0.8
Melvin Miller Park	City of Eugene	City of Eugene	11.6	11.6
Murray Hill	City of Eugene	City of Eugene	77.9	77.9
Nolan Mitigation Site	Bureau of Land Management; City of Eugene	City of Eugene	13.5	12.1
Oak Patch East	City of Eugene	City of Eugene	8.2	8.2
Oak Patch West	City of Eugene	City of Eugene	5.9	5.9
Richardson Bridge	City of Eugene	City of Eugene	3.1	3.1
Sam Reynolds	City of Eugene	City of Eugene	5.1	5.1
Skyview Park	City of Eugene	City of Eugene	4.3	4.3
Tsal Luk-wah	Bureau of Land Management; City of Eugene	Bureau of Land Management; City of Eugene	102.6	0.2
Videra Park	City of Eugene	City of Eugene	7.7	7.7
Warbling Creek	City of Eugene	City of Eugene	1.3	1.3
Wild Iris Ridge	City of Eugene	City of Eugene	249.5	249.5
Willow Corner	City of Eugene	City of Eugene	6.6	6.6
Willow Creek Preserve	The Nature Conservancy	The Nature Conservancy	529.0	
Timberline Creek	City of Eugene	City of Eugene	1.0	1.0
Timberline Creek	City of Eugene	City of Eugene	0.2	0.2
Timberline BMP	Private	City of Eugene	0.5	
			1711.9	725.3



Southwest Sub-Area

