

RIVER ROAD/SANTA CLARA PARKS AND RECREATION

Eugene's Parks and Recreation system are categorized into six neighborhood planning sub-areas. This report addresses parks and recreation facilities and needs in the River Road/Santa Clara area. These geographically based areas allow us to look at the unique characteristics and opportunities of each area and how facilities and services are distributed throughout the community.

Existing Resources and Facilities-

River Road/ Santa Clara currently has 263 acres of parks, recreation and open space (including partner-owned lands) with 198 of those acres owned by the City of Eugene. This sub-area has the following distinct features:

RECREATION SERVICES

- River Road Parks and Recreation District (RRPRD) provides recreation services to residents within the River Road service district boundary, including a community/recreation center and pool facilities.
- City of Eugene Recreation provides services via a Grant partnership with School District 4J. The "BEST" afterschool program is located at Kelly Middle School, Madison Middle School, Howard Elementary School, Irving Elementary School, and River Road Elementary School.

PARKS

- Two community park sites and twelve neighborhood parks serve the area.
 - River Road Parks and Recreation District manages Emerald Park that serves as the primary community park for River Road.
 - Land is being acquired for a community park and multi-purpose community center in Santa Clara, adjacent to Madison Middle School, and with a goal of connecting the park to the Willamette River.
 - Neighborhood Parks in the area are: Awbrey Park, Filbert Meadows Park, Bramblewood Park, Arrowhead Park, Rosetta Place Park, and Walnut Grove Park
 - Future neighborhood park sites owned by the City are: Wendover Park, Ferndale Park, Terra Linda Park, Lone Oak Park, Ruby Park, and Bobolink Park
- Specialty facilities include:
 - Skatepark at Emerald Park (RRPRD).
 - Boat landings at Hileman and Whitely (Lane County)
- In addition to playgrounds at parks, school playgrounds are accessible at Awbrey Park Elementary, Spring Creek Elementary, Irving Elementary, Corridor Elementary, River Road/ El Camino del Rio Elementary and Howard Elementary Schools.

SPORTS FACILITIES

- Artificial turf fields are available at North Eugene High School, and Kelly and Madison Middle Schools.
- All-weather surface tracks are available at North Eugene High School and Madison Middle School.
- Tennis courts (4) are available at North High School.
- Indoor gyms for basketball and volleyball are available at North Eugene High School and Kelly and Madison Middle Schools.

NATURAL AREAS

- The West Bank Park and Ruth Bascom Trail along the Willamette River provide the River Road area with plant and wildlife habitat connectivity and transportation and recreation opportunities.
- Additional natural waterways such as Santa Clara Waterway, Flat Creek and Spring Creek provide habitat and the potential for transportation and recreation opportunities.

Issues and Needs-

- Residents of Santa Clara lack access to a city-owned community center or pool.
- Availability of neighborhood parks in some parts of River Road/ Santa Clara is very limited:
 - There are six neighborhood park sites that have not been developed yet;
 - In addition to the six current undeveloped sites, there is a need for three to five additional neighborhood park site acquisitions; and
 - Access improvements for walking and biking are needed to improve access to some parks.
- Santa Clara Community Park has not been developed yet, and additional land is needed to provide more acreage, better connectivity, and a connection to the Willamette River.
- River Road/ Santa Clara does not have many specialty facilities, including a dog park, spray play park, community garden or running trail.
- Sports fields and gym space are in high demand across the community. In particular is a need for a multi-field facility that can accommodate local use and tournaments.
- As a result of illicit camping, behaviors and activities, there are safety related concerns along West Bank Park on the Willamette River.
- Acquiring additional land along the Willamette River, north of Beltline, is a key long-range vision contingent in large part on land acquisition from sand and gravel companies (See the [Willamette River Open Space Vision and Action Plan](#)). North-south connectivity along the edge of the urban growth boundary can be explored in the meantime.
- River Road/ Santa Clara has poor access to large natural areas in comparison to other areas of town. Razor Park, natural areas along the river in West Bank Park, natural waterways and sloughs, as well as Walnut Grove are the primary natural resource areas.

Vision Ideas-

The following ideas were identified as a result of community input and the needs assessment analysis. These are not formal proposals at this time, but ideas intended to promote additional community engagement and a discussion of priorities. Are we on the right track? What have we missed? These ideas are grouped under headings that represent the four key themes that came out of the needs assessment.

Care for and make the most of what we have:

- Fund long term maintenance and management of parks, trails and high priority habitats.
- Renovate and rehabilitate parks and specialty facilities (see chart).
- Improve safe access to the Willamette River for swimming, fishing, paddling and nature viewing, while maintaining or improving habitat for fish and wildlife.
- Improve safety along the Willamette River corridor by providing additional lighting and vegetation management. Consider additional security measures such as park ambassadors, hosts or rangers.

Serve the entire community:

- Build a new community center and pool facility in Santa Clara. Explore locations and potential partnerships with other community organizations to leverage resources and limit City capital and operational costs to the extent possible.
- Extend Summer Fun For All services to parks in identified low-income areas.
- Acquire additional land and develop Santa Clara Community Park as the community park for this sub-area.
- Build six new neighborhood parks on land already owned and identified for parks (Wendover Park, Bobolink Park, Ferndale Park, Terra Linda Park, Ruby Park and Lone Oak Park).
- Add play area(s) within West Bank Park (location(s) TBD).
- Add specialty recreation amenities to sub-area, including:
 - a dog park (location TBD),
 - a spray play feature at Santa Clara Community Park, and
 - a community garden (location TBD).
- Acquire three to five new neighborhood park sites in underserved areas and develop them.
- Seek opportunities to acquire and provide access to large natural areas providing habitat and transportation/trail connectivity on the north side of Eugene. This planning should be conducted with adjacent neighborhood planning sub-areas.

Create more connections:

- Establish *Neighborhood Greenways*, making street crossing and route improvements to expand safe walking and biking access to neighborhood parks and other destinations.
- Build new segments of paved shared use paths that connect to the West Bank Path and along Division Avenue, totaling approximately 2 miles. For locations see, the [Eugene Transportation System Plan](#), Bicycling Projects Map.
- Build new soft surface trails, totaling approximately 10 miles. For locations see, [Eugene Trails Plan](#):
 - Continue the West Bank Path, north of Beltline, in partnership with current property owners;
 - Seek opportunities to develop a “farm belt” bike/pedestrian corridor and destination site to connect Eugene with nearby agricultural sites. Explore options to provide farm-related programming at city-owned or partner site.
 - A running trail that runs parallel to West Bank Path; and
 - A running trail at Santa Clara Community Park.
- Acquire Willamette Riverfront property north of Beltline to increase recreation opportunities and access to the river and nature for residents in Santa Clara.

Build better partnerships:

- Partner with the River Road Park and Recreation District, YMCA and 4J School District on plans to increase recreation facilities in the area and fill current service gaps.
- Work with 4J to update school playgrounds as needed and to replace artificial turf at Madison Middle School and North Eugene HS. Renovate tennis courts at North Eugene HS.
- Partner with local health care organizations to provide health, wellness and rehabilitation services.
- Continue the Rivers to Ridges Partnership to protect and enhance the region’s land and water resources.
- Continue to facilitate volunteer efforts in area parks, natural areas and recreation facilities.

System-wide Recommendations:

- Update and implement the Eugene Urban Forest Management Plan.
- Develop and implement a system-wide natural areas assessment and plan.
- Develop and implement a city-wide restroom system master plan.
- Develop and implement a city-wide irrigation system water management plan.
- Develop and implement a comprehensive approach to locating spray play, nature play, inclusive play, and multi-generational playgrounds/exercise equipment.
- Improve accessibility for all ages and abilities.
- Implement comprehensive signage improvements.

DRAFT

River Road/ Santa Clara Community Centers and Pools

See definitions of “major renovation,” “rehabilitate” and “maintain” below. “x” in a column indicates what type of project is needed; a,b,c,etc. in a column denotes the type of project and indicates a note below.

Facility Type	Develop new facility	Major renovation	Rehabilitate	Maintain
<i>Community Center</i>	X			
<i>Pool</i>	X			

River Road/ Santa Clara Parks

Park Name	Develop new park/ amenity	Major renovation	Rehabilitate	Maintain
<i>Arrowhead Park</i>				X
<i>Awbrey Park</i>				X
<i>Bobolink Park</i>	X			
<i>Bramblewood Park</i>			X	
<i>Ferndale Park</i>	X			
<i>Filbert Meadows Park</i>				X
<i>Lone Oak Park</i>	X			
<i>Rosetta Park</i>				X
<i>Ruby Park</i>	X			
<i>Santa Clara Comm Park</i>	X			
<i>Terra Linda Park</i>	X			
<i>Walnut Grove Park</i>			X	
<i>Wendover Park</i>	X			
<i>Acquisition 1</i>	X			
<i>Acquisition 2</i>	X			
<i>Acquisition 3</i>	X			
<i>Acquisition 4</i>	X			
<i>Acquisition 5</i>	X			

River Road/ Santa Clara Specialty Facilities

Facility Type	Develop new facility	Major renovation	Rehabilitate	Maintain
<i>Spray play</i>	X			
<i>Community garden</i>	X			
<i>Dog park</i>	X			
<i>NEHS Turf field</i>		2022		
<i>Madison MS Turf field</i>		2016-2018		
<i>Kelly MS Turf field</i>		2024-2026		
<i>Running trail</i>	X			
<i>NEHS Tennis courts</i>		X		

Develop new	Build new park or facility. Master plans are needed before development.
Major renovation	Developed parks in overall poor condition and in need of major renovation within a 10 year timeframe.
Rehabilitate	Developed parks with one or two basic features in poor condition and in need of rehabilitation within a 10 year timeframe.
Maintain	Developed parks in good condition requiring only basic maintenance and minor repairs.

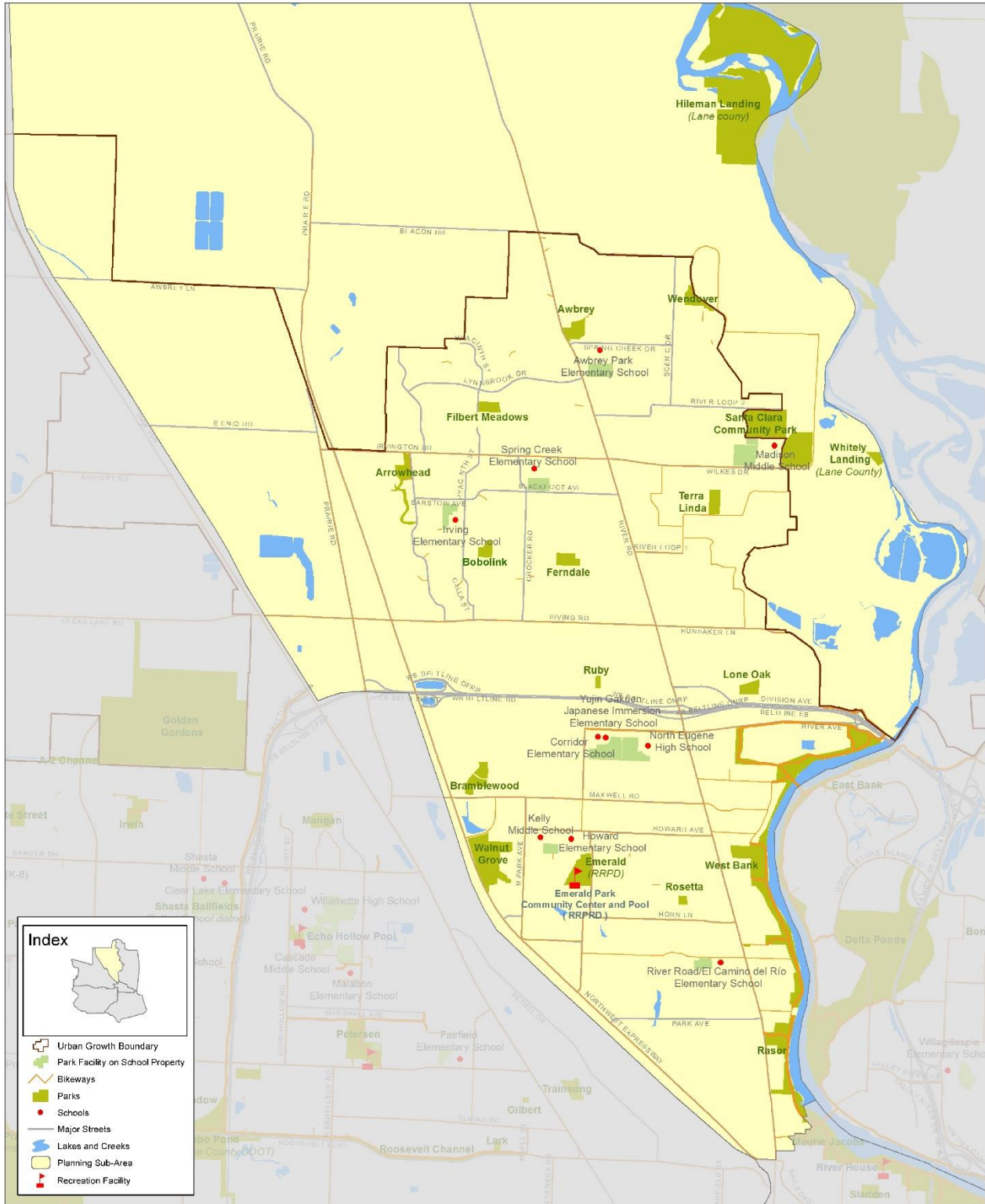
River Road/ Santa Clara Natural Areas

<i>Natural Area Name</i>	Trails and Trailheads		Habitat and Ecologic Function	
	Develop New	Renovate/ Maintain	Restore	Maintain
<i>Willamette River</i>				
East Santa Clara Waterway				X
Flat Creek				X
Heron Slough*				X
Rasor Park				X
Spring Creek				X
West Bank	a			X
<i>Neighborhood Natural Areas</i>				
Arrowhead Park		M		X
Awbrey Park				X
Bramblewood Park	X			X
Ferndale Park		M		X
Walnut Grove Park				X
Wendover Park				X

Develop new	Build trails, trailheads and other recreation amenities to facilitate public access. Management Plans are needed before development.
Renovate/ Maintain	Renovate existing trails, trailheads and other recreation amenities within a 10 year timeframe or perform basic general maintenance as needed. (R= renovate, M= maintain).
Restore	Poor condition for habitat that requires extensive restoration within a 10 year timeframe.
Maintain	Requires only basic habitat enhancement or general maintenance.
Notes:	*Located within West Bank park. a. Develop play areas at locations to be identified.

SANTA CLARA/RIVER ROAD PLANNING SUB-AREA INVENTORY

Name	Property Owner	Agency Responsible for Maintenance	Total Acres	City Owned
Arrowhead Park	City of Eugene	City of Eugene	8.0	8.0
Awbrey Park	City of Eugene	City of Eugene	5.3	5.3
Bramblewood Park	City of Eugene	City of Eugene	7.1	7.1
Emerald Park	River Road Park & Recreation District	River Road Park & Recreation District	10.1	
Ferndale Park	City of Eugene	City of Eugene	4.5	4.5
Filbert Meadows Park	City of Eugene	City of Eugene	3.6	3.6
Hileman Landing	Lane County Parks	Lane County Parks	53.2	
Lone Oak Park	City of Eugene	City of Eugene	3.9	3.9
Razor Park	City of Eugene	City of Eugene	11.9	11.9
River Road Annex	River Road Park & Recreation District	River Road Park & Recreation District	0.2	
Rosetta Park	City of Eugene	City of Eugene	1.3	1.3
Ruby Park	City of Eugene	City of Eugene	1.1	1.1
Santa Clara Community Park	City of Eugene	City of Eugene	35.6	35.6
Terra Linda Park	City of Eugene	City of Eugene	4.5	4.5
Walnut Grove Park	City of Eugene	City of Eugene	23.0	23.0
Wendover Park	City of Eugene	City of Eugene	5.1	5.1
West Bank	City of Eugene	City of Eugene	7.6	7.6
West Bank	City of Eugene	City of Eugene	47.5	47.5
West Bank	Metropolitan Wastewater Mgmt. Commission	City of Eugene	24.4	24.4
Whitely Landing	Lane County Parks	Lane County Parks	2.1	
Bobolink Park	City of Eugene	City of Eugene	2.9	2.9
Bobolink Park	ROW	City of Eugene	0.4	0.4
			263.4	197.6



River Road/Santa Clara Sub-Area

