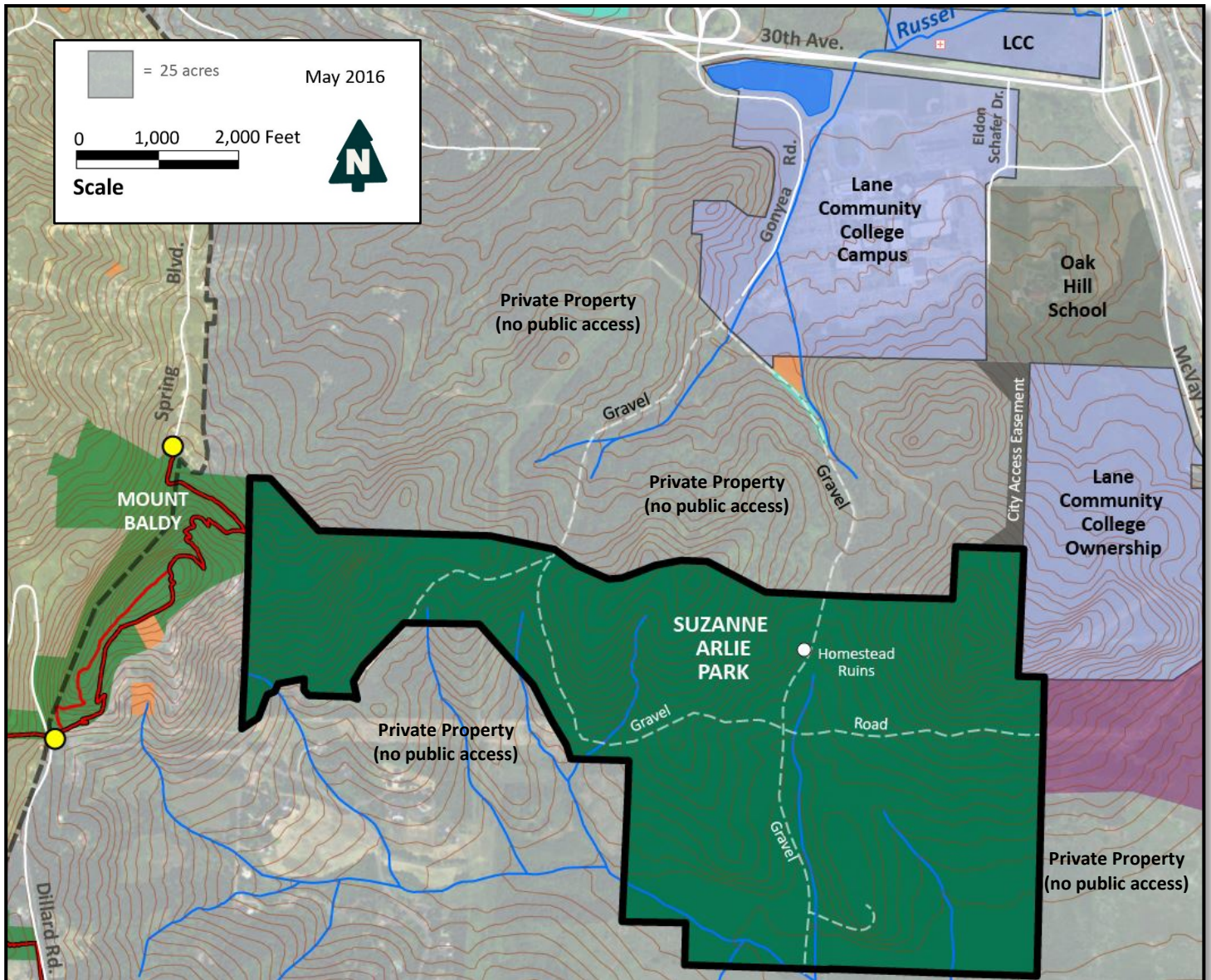


Suzanne Arlie Park



About Suzanne Arlie Park

Suzanne Arlie Park is situated to the south and east of the Eugene city limits and was acquired by the City of Eugene in two separate land transactions in 2008 and 2011, utilizing funds raised primarily through the 2006 voter approved Parks, Recreation, and Open Space Bond Measure. At 515 acres, Suzanne Arlie Park is the largest single park in the City's system and was acquired to accommodate the planned eastward extension of the Ridgeline Trail network, a wide range of other nature-based recreational activities and facilities, and to conserve the high value habitats found on the site.

Master Planning Process

The City of Eugene has begun a master planning process to determine how the park will be managed and developed for recreational uses over the next twenty years. For more information about the park and to fill out a survey, please visit:

<https://engage.eugene-or.gov/arliepark>

Project Manager:

Philip Richardson, Landscape Architect
PRichardson@eugene-or.gov

November 2019