



SOUTH WILLAMETTE Street Improvement Plan

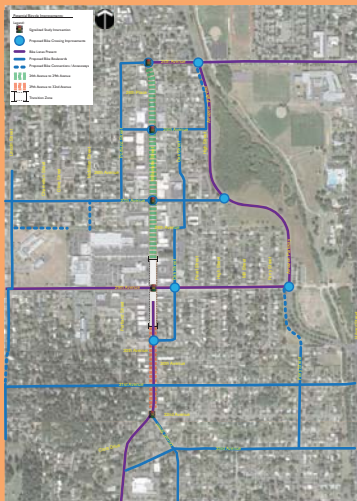
Evaluate the Alternatives

The project team will gather input on several alternatives for redesigning Willamette Street from 24th to 32nd Avenue. The results will be used to help narrow and refine the alternatives for further analysis.

Community Forum #2:

Wednesday, February 27
6 – 8 p.m.

South Eugene
High School Cafeteria,
400 E. 19th Ave.



Bicycle routes are a key ingredient for future improvements. Bike routes parallel to South Willamette Street may be developed as a part of any of the alternatives.

