

Spill Control Manhole

<u>Stormwater Management Goals Achieved</u>	<u>Acceptable Sizing Methodologies</u>
√ Pollution Reduction ¹ (Oil Only).....	PRES ¹
Flow Control.....	NA
Destination.....	NA
This facility is not classified as an Underground Injection Control structure (UIC).	
SIM=Simplified Approach, PRES= Presumptive Approach, PERF= Performance Approach	
Notes: 1) Spill control manholes receive credit for oil removal only. They may be used to remove oil from parking lots and other vehicular access areas.	

Description: Spill control manholes rely on passive mechanisms that take advantage of oil being lighter than water. Oil rises to the surface and can be periodically removed. They consist of a simple underground manhole with a “T” outlet designed to trap small spills. Spill control manholes will not be given credit for basic pollution reduction requirements. They must be used in conjunction with other pollution reduction systems from this chapter to meet oil control and pollution reduction requirements.

Other Options: There may be other acceptable oil controls not listed above. Applicants may propose an alternative oil control option under the performance approach. However, proposal of a new oil control will require an additional review process for approval, which may delay issuance of related building permits.

Design and Sizing Criteria:

- Spill control manholes shall be used in conjunction with an appropriately sized pollution reduction facility. The spill control sump volume shall be 60 cubic feet *or* 20 cubic feet of sump capacity for each cubic feet per second (cfs) of peak pollution reduction design flow, whichever is greater.
- To maintain efficiencies and reduce size, all roof drainage shall enter the stormwater system downstream of the spill control manhole, unless sized accordingly.
- Any pumping devices shall be installed downstream of the spill control manhole to prevent oil emulsification in stormwater.
- Engineered calculations are required, using the Rational Method ($Q=C*I*A$).

Stormwater Report Requirements For Presumptive Approach: See Exhibit 2-2.

Spill Control Manhole

Checklist of minimal information to be shown on the permit drawings:

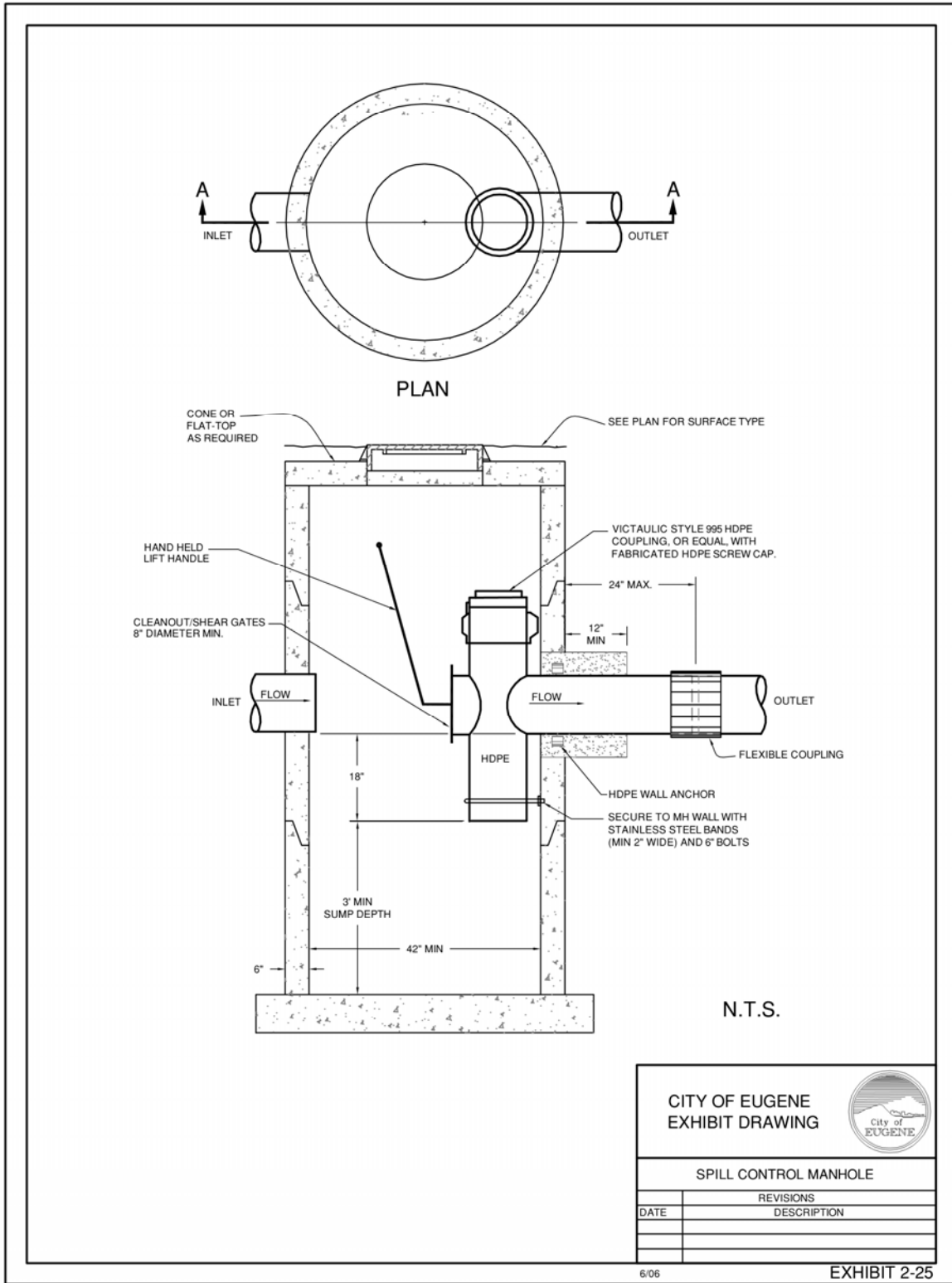
- 1) Facility dimensions and location.
- 2) Profile view of facility, including typical cross-section details with dimensions.
These details shall match manufacturer specifications and details.
- 3) All stormwater piping associated with the facility, including pipe materials, sizes, slopes, and invert elevations at every bend or connection.

Inspection requirements and schedule: The following table shall be used to determine which stormwater facility components require City inspection, and when the inspection shall be requested:

Facility Component	Inspection Requirement
Manhole excavation	
Piping	Call for inspection
Manhole installation	Call for inspection

Operations and Maintenance requirements: See Chapter 3.0.

Spill Control Manhole



Spill Control Manhole

{this page left blank intentionally}